

## **Geographic Management of Cancer Health Disparities Program (GMaP) Region 2**

***January 2020 E-Blast***

GMaP is an integrated network of 7 regions across the United States. Moffitt Cancer Center in Tampa, FL serves as the hub for GMaP Region 2 which currently includes more than 40 partner institutions in Alabama, Arkansas, Florida, Georgia, Louisiana, Mississippi, Missouri, and Puerto Rico.

***You are receiving this email as a Cancer  
Researcher in GMaP Region 2***

**GMaP Region 2  
TRAVEL AWARDS ARE NOW AVAILABLE!**



**\*ATTENTION: Conferences, workshops and trainings taking place after January 30th, 2020 are still eligible for the GMaP Region 2 Travel Award\***  
GMaP Region 2 is offering travel awards to Early Stage Investigators and Trainees intended to support career development related to cancer research or cancer health disparities research. This scholarship will provide reimbursement (e.g. registration, airfare, hotel, etc.) for ESI's or Trainees to present research at conferences and attend skills workshops/trainings. Applicants must be located in a GMaP Region 2 state/territory, be a trainee or Early Stage Investigator (ESI), and submit a complete application.

To learn more and/or apply for a travel award click the link below!

[CLICK HERE](#)

---

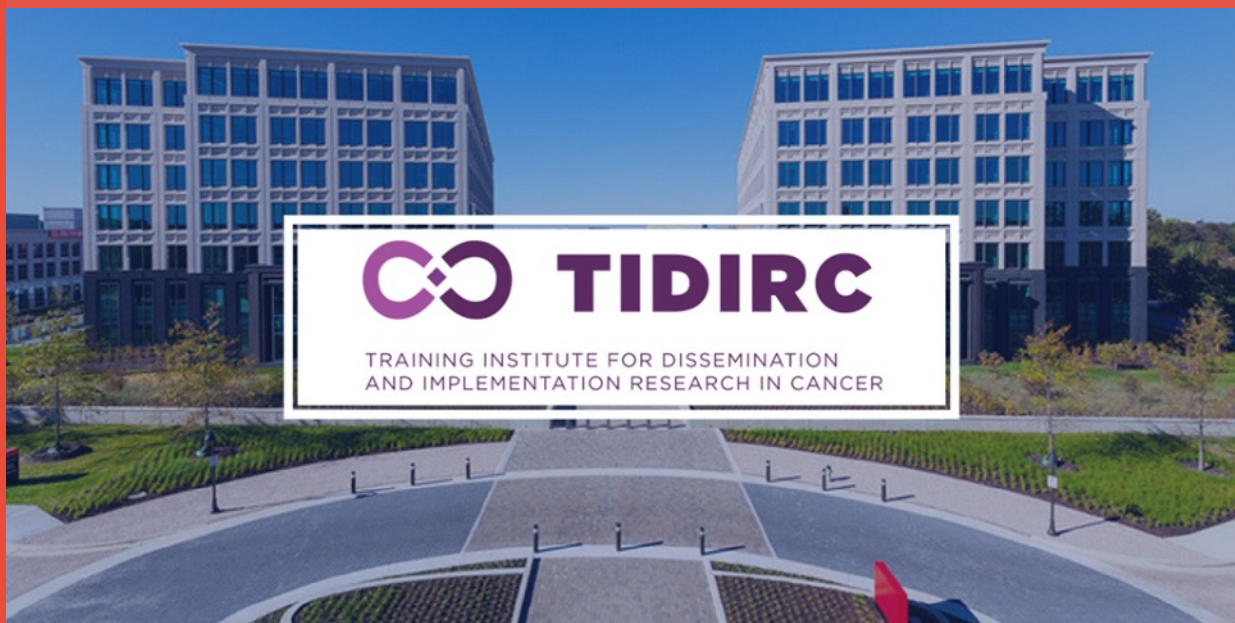
Connect with GMaP Region 2 on Social Media!



[Click to Visit our GMaP Region 2 Website](#)

---

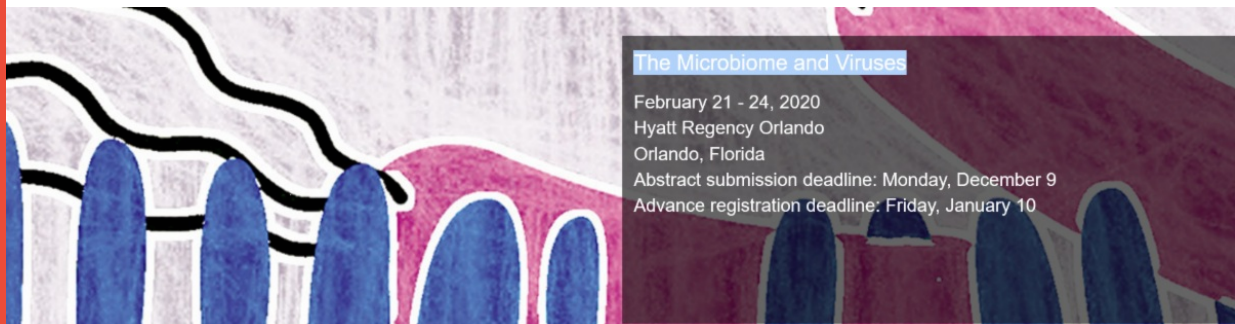
# UPCOMING CONFERENCES & WORKSHOPS



The National Cancer Institute (NCI) Division of Cancer Control and Population Sciences (DCCPS) hosts this training institute to provide participants with a thorough grounding in conducting dissemination and implementation (D&I) research with a specific focus on cancer, across the cancer control continuum. The institute utilizes a combination of online coursework (six modules with related assignments), and a 2-day in-person training. Faculty and guest lecturers consist of leading experts in D&I theories, models, and frameworks; intervention fidelity and adaptation; stakeholder engagement and partnership for D&I; research methods and study designs for D&I; and measures and outcomes for D&I.

The 2020 application period will close **January 15, 2020 at 12pm ET.**

For more information please visit the [website](#).



## The Microbiome and Viruses

This conference will take place from **Friday, February 21 - Monday, February 24, 2020** at the Hyatt Regency Orlando in Orlando, Florida. The conference aims to illuminate the impact of the microbiome on cancers and cancer therapy will also be discussed. The study of the microbiota and its effects on cancer have transformed how we examine therapies and relationships with the immune system. Tumor microenvironments, and the associated tumor microbiota, have also played a role in individualized immunotherapy, and the development of novel therapeutics. This conference will cover a wide range of topics including the role of the microbiota in metabolism and immunity, oncogenic viruses, and the microbiota in cancer prevention and therapy.

**Advance Registration Deadline: Friday, Jan. 10, 2020, 11:59 p.m. ET**

For more information please visit the [website](#).



## ADVANCING THE SCIENCE OF CANCER IN LATINOS

The Mays Cancer Center and the Institute for Health Promotion Research at UT Health San Antonio are hosting the second international conference on Advancing the Science of Cancer in Latinos on **February 26-28, 2020**, in San Antonio, Texas.

This conference comes at an especially important time when Latinos – the largest, youngest and fastest-growing minority group in the U.S. – are expected to face a 142% rise in cancer cases in coming years. Disparities continue to plague this population in access to care, risk factor behaviors, mortality, and quality of life. Our vision has been to unite researchers, scientists, physicians, healthcare professionals, patient advocates and students from across the nation and beyond, in an open dialogue, under one roof, to discuss research advancements to date, identify gaps, and develop actionable goals to translate basic research into clinical best practices, effective community interventions, and professional training programs to eliminate cancer disparities in Latinos.

We hope you will join us in February 2020 to gain a comprehensive perspective on Latino cancer health disparities, learn how you can apply some of this research and practice into your own work, and help us foster more collaboration, more research and more success in improving the health and lives of Latinos.

For more information please visit the [website](#).



### 4th Annual Cancer Disparities Symposium: Cultivating Science and Community Engagement to Address Cancer Health Disparities

Presented by Case Comprehensive Cancer Center Office of Cancer Disparities Research, the 4th Annual Cancer Disparities Symposium will take place on **Friday, March 6, 2020** at the Tinkham Veale University Center at Case Western Reserve University in Cleveland, OH. The symposium will feature keynote presentations by renowned disparities researchers and community leaders, a poster session highlighting academic research and community programs, a networking session and an interactive panel discussion.

The Case Comprehensive Cancer Center Office of Cancer Disparities Research invites multidisciplinary researchers, community agencies and organizations to submit abstracts for presentation at the 4th Annual Cancer Disparities Symposium. Abstracts will be divided into two tracks: Scientific Research and Community Programs.

Meritorious abstracts will be selected for oral presentations.

**Abstracts must be submitted electronically by 5 pm ET on Tuesday, December 3, 2019.**



## 19th Annual Health Literacy Conference

Institute for Healthcare Advancement's Annual Health Literacy Conference draws participants from around the world to discuss practical health literacy solutions. Whether you work directly with the public or behind the scenes, in patient education or in research, at a small non-profit or a large corporation – there's something for everyone.

Health literacy must become an integral component of all health programs, quality improvement initiatives, and cost containment efforts to achieve successful outcomes for everyone. This important event happens just once a year. Take this opportunity to experience IHA's Annual Health Literacy Conference. The conference will be held at the Hilton Orange County in Costa Mesa, CA from **Wednesday, May 13th - Friday, May 15th, 2020**

For more information please visit the [website](#).



## Transdisciplinary Community-Based Participatory Research Training Workshop

Featuring 12 nationally-recognized experts in Community-Based Participatory Research (CBPR), this state-of-the-art, 2 ½ day workshop is geared especially for early stage investigators from various research and/or clinical backgrounds as well as researchers and clinicians more advanced in their career who want to further hone their community engagement skills. The workshop will be held at the University of Tennessee Health Science Center (UTHSC) in Memphis, TN from **Thursday, June 11- Saturday, June 13, 2020**.

As part of the workshop, trainees will learn how to create and sustain community partnerships in order to meaningfully impact cancer health disparities. In addition, trainees will have the opportunity to dialogue with nationally-recognized experts in CBPR who will present on a variety of CBPR components and discuss exemplars in CBPR research across the cancer continuum. In addition, trainees will have the opportunity to develop their own study ideas and receive feedback from CBPR experts. Trainees will engage in experiential learning and also will have the opportunity to tour the National Civil Rights Museum. Finally, trainees will be paired with a research mentor through the National Institutes of Health (NIH)-funded National Research Mentoring Network (NRMN) for continued research mentorship for 1 year following the workshop. The overall vision of this workshop is to equip trainees with the knowledge and skills needed to submit a grant application by Fall 2021.

**Applications will be accepted through March 1, 2020.**

Registration is limited to 50 trainees, so applying early is encouraged.

For more information please visit the [website](#).



## Transdisciplinary Research on Energetics and Cancer (TREC) Training Workshop

Funded by the U.S. National Cancer Institute and led by Yale University's Dr. Melinda Irwin with a Senior Advisory Board and an expert international faculty, this program builds capacity in TD energetics and cancer research and is designed for early career investigators (i.e., junior faculty and postdocs). This 5-day, in residence Workshop is offered annually and places emphasis on developing and applying TD competencies focused on energetics (i.e., obesity, diet and exercise) and cancer. Faculty span an array of professional disciplines, from basic scientists to clinicians to behavioral and population scientists. Formal didactic learning is integrated with one-on-one dialog and small group discussions to enable fellows to learn from each other, from faculty, and to develop a TD network.

The 4<sup>th</sup> annual course will be held **Sunday, June 21<sup>st</sup> - Friday, June 26<sup>th</sup>, 2020** at Water's Edge Resort, Westbrook, CT, U.S.A. Costs will be covered (excluding ground transportation).

**Notification of Intent to apply** (simple, informal email to [dlowry@fredhutch.org](mailto:dlowry@fredhutch.org)) **due no later than December 16, 2019. Full application is due no later than Wednesday, January 15, 2020.**

For more details and to apply, visit [TRECTraining.yale.edu](https://TRECTraining.yale.edu).  
For questions, please contact Diana Lowry at [dlowry@fredhutch.org](mailto:dlowry@fredhutch.org).



The National Institute on Minority Health and Health Disparities (NIMHD) will host the next Health Disparities Research Institute (HDRI) from August 3 to 7, 2020.

The HDRI aims to support the research career development of promising early-career minority health/health disparities research scientists, and stimulate research in the disciplines supported by health disparities science. Applications will only be accepted from individuals who meet NIH's Early Stage Investigator (ESI) eligibility criteria.

Click [here](#) to sign up for NIMHD updates to receive notices about the course, application cycle and other announcements.

For more information please visit the [website](#).

## AWARDS/SCHOLARSHIPS/INTERNSHIPS



The National Cancer Institute (NCI) Division of Cancer Control and Population Sciences (DCCPS) hosts

this training institute to provide participants with a thorough grounding in conducting multilevel intervention (MLI) research with a specific focus on cancer, across the cancer control continuum. The institute utilizes a combination of a one-day in-person and distance learning sessions (4 months) that cover relevant theory and its use in multilevel intervention research; study approaches and methods (quantitative, qualitative, and mixed methods); and additional topics central to the design, successful funding, and conduct of research on multilevel healthcare delivery interventions. Faculty and guest lecturers are leading experts in multilevel research.

Additional information about this program can be found at this [website](#).  
Applicants must submit a completed application document to the [application website](#) by **12:00 noon Eastern Standard Time on Monday, January 20, 2020.**



## PHAP

PUBLIC HEALTH  
ASSOCIATE PROGRAM

The Public Health Associate Program (PHAP) is a competitive, two-year, paid training program with the Centers for Disease Control and Prevention. PHAP associates are assigned to public health agencies and nongovernmental organizations in the United States and US territories, and work alongside other professionals across a variety of public health settings.

Throughout the two-year training program, associates gain hands-on experience that will serve as a foundation for their public health careers. After completing the program, PHAP graduates are qualified to apply for jobs with public health agencies and organizations.

Additional information about this program can be found at this [website](#).  
Applications will open between **January 22nd and January 28th, 2020.**



The National Cancer Institute's (NCI) [Cancer Systems Biology Consortium](#) and [Physical Sciences in Oncology Network](#) are offering rising Junior and Senior undergraduates the opportunity to work closely with faculty mentors from NCI-supported institutions in the interdisciplinary fields of systems biology and physical oncology.

Additional information about this program can be found at this [website](#).  
Applications are due Friday, February 7th, 2020.



The new Intramural Continuing Umbrella of Research Experiences (iCURE) program supports mentored research experiences for qualified students and scientists in the multidisciplinary research environment of the NCI campuses in Bethesda, Rockville, and Frederick, Maryland. iCURE strongly encourages the participation of individuals from underrepresented populations and is aligned with NCI's interest in diversity.

Additional information about this program can be found at this [website](#).  
Applications are due Friday, January 17th, 2020.



LSUHSC • MOFFITT  
**SPIRIT-CHD**  
Southeast Partnership for Improving Research  
& Training in Cancer Health Disparities

The SPIRIT-CHD Summer Internship Program provides students in Tampa, Florida and New Orleans, Louisiana with 8-weeks of intensive clinical and/or behavioral research studies under the mentorship of an assigned expert research scientist from Moffitt Cancer Center in Tampa, Florida or Louisiana State University Health Sciences Center in New Orleans, Louisiana.

The SPIRIT-CHD is open to U.S. citizens currently enrolled as an undergraduate or medical school student interested in biomedical research. The SPIRIT-CHD has an added focus on cancer health disparities, biobanking and precision medicine research. Minority undergraduate and medical school students are encouraged to apply.

For their participation in the program participants will receive a stipend to cover personal expenses. Housing is not covered for out-of-town students and candidates are required to make their own living arrangements for the duration of the program.

Additional information about this program can be found at this [website](#).  
Applications are due **Friday, January 31st, 2020** and can be completed at this [link](#).



## NCI Communications Fellowship (NCF)

The NCI Communications Fellowship (NCF), formerly known as the Health Communications Internship Program (HCIP), gives highly-qualified graduate students and recent graduate degree recipients the opportunity to participate in vital communications projects across the National Cancer Institute (NCI).

NCF Fellows are offered one-year fellowships in various communications and science-focused offices at NCI and a robust career development series. The NCF highly encourages individuals with communications education and/or experience who are represented in NIH's Notice of Interest in Diversity ([NOT-OD-18-210](#)) to apply.

Additional information about this program, including fellowship requirements, examples of past work assignments, and the online application can be found by visiting the [NCF website](#).



## Medical Research Scholars Program(MRSP)

The [Medical Research Scholars Program](#) endeavors to be the premier training program for future clinician-scientists that advances health by inspiring careers in biomedical research. By engaging students in basic, clinical, or translational research investigations, a curriculum rich in didactics and professional development, and a robust mentorship and advising program, MRSP prepares its Scholars to become tomorrow's leaders in medicine and biomedical research.

The 12 month program is designed for students who are U.S. citizens and permanent residents who have a strong interest in conducting basic, clinical, translational, population health research and are currently enrolled in their 2nd, 3rd, or 4th year at an accredited medical, dental, or veterinary program.

The application cycle for the 2020–2021 program is from **October 1, 2019 to January 10, 2020**.  
For application details, please click [here](#).



### The Tribal Researchers' Cancer Control Fellowship Program is recruiting a third cohort!

The overall goal of the Tribal Researchers' Cancer Control Fellowship Program is to reduce cancer incidence and mortality and improve cancer survival in tribal communities through the efforts of AI/AN researchers. This fellowship program offers training and mentorship to prepare researchers to design and implement cancer-related research projects within AI/AN communities. Costs associated with the training, including travel will be covered.

For more information please see the following [flyer](#).



### Cancer Prevention & Control Research Training Program

The Cancer Prevention and Control (CAPAC) Research Training Program at the Division of Cancer Control and Population Sciences of the University of Puerto Rico Comprehensive Cancer Center (UPRCCC) aims to increase the pool of master's degree graduates and other health professionals to pursue a doctoral degree and/or a career in cancer prevention and control research with a focus on Hispanic health and health disparities. The long-term goal of this Program is to contribute to the development of the next generation of successful cancer control researchers with a cultural sensitivity to the Hispanic population.

For more information please visit the [website](#).

### Scientist Mentoring & Diversity Program

The Scientist Mentoring & Diversity Program (SMDP) is accepting applications for the 2020 SMDP. Ethnically diverse university students and recent graduates in technical fields are invited to apply (Hispanic Americans, Pacific Islanders, African Americans and American Indians). To qualify, applicants must be interested in a career in biotechnology, medical technology or consumer healthcare industries and seek to receive career mentoring and training from industry leaders.

For more information please visit the [website](#).



[Research Career Development Awards \(K-Series\)](#) - National Institutes of Health (NIH). **Application deadlines vary**

[NIH Loan Repayment Programs \(LRPs\)](#). **Application deadlines vary**

[2020 William G. Coleman Jr., PhD., Minority Health and Disparities Research Innovation Awardees Announced](#)

# EMPLOYMENT OPPORTUNITIES

**(NEW) [Open Positions](#)**, Behavioral Research Program (BRP), National Cancer Institute (NCI) Division of Cancer Control & Population Sciences

**(NEW) [Faculty Member](#)**, Virginia Commonwealth University Department of Health Behavior and Policy

**[Project Assistant](#)**, Division of Clinical and Administrative Services (DCAS) of the College of Pharmacy, Xavier University of Louisiana

**[Faculty Member](#)**, Department of Health Outcomes & Behavior, H. Lee Moffitt Cancer Center & Research Institute

**[Postdoctoral Scholar in Health Inequities](#)**, Center for Health Outcomes and Population Equity (Center for HOPE), University of Utah

**[Postdoctoral Fellow](#)**, Brown School and the Division of Public Health Sciences, Washington University in St. Louis and Siteman Cancer Center

**[Clinical Assistant or Associate Professor](#)**, School of Public Health and Health Professions, University at Buffalo

**[Postdoctoral Fellow](#)**, Division of Population Science, H. Lee Moffitt Cancer Center & Research Institute

**[Postdoctoral Fellow](#)**, Center for Health Behavior Research, University of Pennsylvania

**[Postdoctoral Fellow](#)**, Department of Medical Social Sciences, Robert H. Lurie Comprehensive Cancer Center, Northwestern University

**[Health Economist](#)**, Healthcare Assessment Research Branch, National Cancer Institute

**[Medical Officer](#)**, Health Systems and Interventions Research Branch, National Cancer Institute

**[Lecturer in Public Health](#)**, Baylor Public Health, Baylor University

**[Associate Professor of Epidemiology](#)**, Baylor Public Health, Baylor University

**[Associate Professor or Assistant Professor](#)**, Community Psychology or Applied Social Psychology, University of Massachusetts Lowell

**[Global Health Technical Positions \(USAID\) - Humanitarian Health Advisor](#)**, Office of U.S. Foreign Disaster Assistance, Washington, D.C.

**[Yale University Cancer Outcomes Faculty Position](#)**, Yale Cancer Outcomes, Public Policy and Effectiveness Research (COPPER) Center

**[San Diego State University Associate Professor/Professor Position](#)**, San Diego State University School of Public Health

**[University of Kentucky Open-Rank Tenure-Faculty Positions](#)**, Center for Health Equity Transformation (CHET), College of Medicine at the

University of Kentucky

[Tenure-track Faculty Position: Cardiovascular Disease Epidemiology and Related Fields-Department of Epidemiology and Population Health](#),  
Department of Epidemiology and Population Health, Albert Einstein  
College of Medicine

[Health Scientist](#), Centers for Disease Control and Prevention

[Epidemiologist](#), Centers for Disease Control and Prevention

[Public Health Analyst](#), Centers for Disease Control and Prevention



## COMMISSIONED CORPS OF THE U.S. PUBLIC HEALTH SERVICE

*America's Health Responders*

The Commissioned Corps is accepting applications for all professional categories for applicants who must be willing to serve where the needs of the service dictate or within the organizations that provide clinical care services listed below.

- Indian Health Service
- Federal Bureau of Prisons
- Department of Homeland Security
  - U.S. Coast Guard
  - Immigration Health Service Corps
- National Institutes of Health
- Federal Occupational Health
- Department of Interior/National Park Service, Clinical Site
- Department of Defense/Defense Health Agency
- U.S. Department of Veterans Affairs/Veterans Health Administration

We are emphasizing our recruiting for the following categories: Medical officers, Veterinary officers, Dental officers, and Nurse Practitioners officers. Inter-service Transfers and Former Commissioned Corps officers, including former JRCOSTEPs, are also encouraged to apply.

To apply please visit the [website](#), contact the Call Center at 1-888-225-3302 or direct your questions to [cchelpdesk@hhs.gov](mailto:cchelpdesk@hhs.gov).

## FUNDING RESOURCES & OPPORTUNITIES

FLORIDA  
BREAST  
CANCER  
FOUNDATION  
*Saving Lives*



The Florida Breast Cancer Foundation is currently offering scientific grants for Pilot Program research projects, with a maximum of \$100,000 for a one year project. Preference will be given to new/first time applicants and to research applications that are a reflection of a collaborative and integrated multidisciplinary approach.

The Florida Breast Cancer Foundation supports unique research projects or ideas (from small- to large-scale) that specifically focus on scientific and clinical breast cancer issues, which, if successfully addressed, could ultimately revolutionize the understanding and/or treatment of breast cancer and move closer to the goal of eradicating the disease.

For more information please visit the [website](#).

**(NEW) Administrative Supplements to Support Cancer Disparity Collaborative Research** | Applications are due February 10, 2020 and September 10, 2020 | [PA-18-842](#)

*\*Pre-Application Webinar, Friday, December 6, 2019, 2:00 – 3:30 PM EST\**

**Social Epigenomics Research Focused on Minority Health and Health Disparities (R01- Clinical Trial Not Allowed)** | Applications are due November 6, 2019, November 6, 2020, November 8, 2021 | [PAR-19-372](#)

[Funding Your Health Equity Research in an Evolving Era: Trends and Tips from National Funding Organizations](#)

**NCI Mechanisms of Disparities in Etiology and Outcomes of Lung Cancer in the US: The Role of Risk and Protective Factors (NEW) (R01 Clinical Trial Not Allowed)** | Applications are due March 4, 2020; March 4, 2021 | [PAR-19-018](#)

**NCI Mechanisms of Disparities in Etiology and Outcomes of Lung Cancer in the US: The Role of Risk and Protective Factors (NEW) (R21 Clinical Trial Not Allowed)** | Applications are due March 4, 2020; March 4, 2021 | [PAR-19-019](#)

Looking for additional [funding opportunities](#)? A full list of CRCHD funding opportunities as well as select NIH opportunities is available online.

The National Cancer Institute has re-issued the **Funding Opportunity Announcement (FOA) Linking the Provider Recommendation to Adolescent HPV Vaccine Uptake (Clinical Trial Optional)** ([PAR-19-360](#) [R01]; [PAR-19-359](#) [R03] and [PAR-19-358](#) [R21]).

This FOA encourages research on how the health care delivery system enhances or inhibits the effectiveness of a provider's recommendation of the adolescent human papillomavirus (HPV) vaccine.

---

**NIH Maximizing Opportunities for Scientific and Academic Independent Careers (MOSAIC)**

The NIH Maximizing Opportunities for Scientific and Academic Independent Careers (MOSAIC) program is designed to facilitate the transition of promising postdoctoral researchers from diverse backgrounds, such as individuals from groups underrepresented in the biomedical research workforce at the faculty level, into independent faculty careers at research-intensive institutions.

The program has two components:

- MOSAIC Postdoctoral Career Transition Award to Promote Diversity (K99/R00). Supports postdoctoral scientists from diverse backgrounds conducting research in areas within the NIGMS mission by providing up to 5 years of support in two phases. The initial (K99) phase provides support for up to 2 years of mentored postdoctoral research training and career development. The second (R00) phase provides up to 3 years of independent research support once the scholar transitions to an independent faculty position. *Awardees must be US Citizens or Permanent Residents.* For more information see: [PAR-19-343](#). Please note, the first application deadline is **February 12, 2020**. **Intramural postdocs are eligible for this award.**
- MOSAIC Institutionally-Focused Research Education Cooperative Agreement to Promote Diversity (UE5). Supports scientific societies whose members conduct research within the NIGMS mission. Awardees will provide skills development, mentoring, and networking opportunities that prepare cohorts of scholars supported by MOSAIC K99/R00 awards to transition into, succeed, and advance in independent faculty careers at research-intensive institutions. For more information see: [PAR-19-342](#).

## Notice of Special Interest (NOSI): NCI's Research Interests to Improve Interprofessional Teamwork and Coordination During Cancer Diagnosis and Treatment

This [NOSI](#) highlights the Healthcare Delivery Research Program's interest in receiving investigator-initiated grant applications focused on understanding and improving interprofessional teamwork and coordination during cancer diagnosis and treatment.

Research encouraged through this NOSI includes, but is not limited to, studies that

- Identify modifiable features of **care team structure** (e.g., care team composition or organization), associated with differences in cancer care quality and patient outcomes.
- Identify modifiable features of **care team processes** (e.g., decision making, communication, coordination behaviors, collaboration, leadership) associated with differences in cancer care quality and patient outcomes.
- Identify **characteristics at the patient, caregiver, care team, delivery organization, health system, and/or community levels** that influence the functioning and effectiveness of interprofessional cancer care teams.

- Develop and test interventions designed to improve cancer care quality and patient outcomes by **modifying the structure and/or functioning** of interprofessional teams.
- Develop and test interventions designed to improve cancer care quality and patient outcomes by **engaging patients and caregivers** as members of their cancer care team.

### Application and Submission Information

This NOSI applies to due dates on or after **September 25, 2019 through January 8, 2022**. Applications related to this NOSI may be submitted using the following funding opportunity announcements or future reissuances:

- [PAR-18-869](#) Modular R01s in Cancer Control and Population Sciences (R01 Clinical Trial Optional)
- [PAR-18-559](#) Cancer Prevention and Control Clinical Trials Grant Program (R01 Clinical Trial Required)
- [PA-19-056](#) NIH Research Project Grant (Parent R01 Clinical Trial Not Allowed)
- [PAR-18-290](#) National Cancer Institute Program Project Applications (P01 Clinical Trial Optional)

An **informational webinar** about this NOSI is being planned and will be announced soon.

## NEWS

**Early Stage Investigator (ESI) Extension Request Process Moving to eRA Commons.** NIH recognizes that a lot can happen to interrupt the ten-year eligibility window of your Early Stage Investigator (ESI) status, such as family care responsibilities, military service, medical concerns, and more. While you may currently request an extension of that ten-year period by completing an Extension Request Form, the process for requesting an extension of ESI status will soon be moving to the eRA Commons. Beginning on August 22, 2019, investigators will be able to request an extension of their ESI eligibility directly through eRA Commons via an ESI Extension request button in the Education section of their personal profile.

[Please learn more about ESI Status Extensions here](#)

## RESOURCES & TOOLS

# Ethnicity & Disease

The purpose of this special issue is to highlight innovative research conducted by early stage researchers, defined as individuals in tenure or non-tenure track positions at the assistant professor rank, whose work aligns with the scope of Ethnicity & Disease. Individuals from under-represented groups are especially encouraged to apply. This Call for Abstracts and the resulting issue arose out of a desire among the journal's editorial board members to enhance publication opportunities for promising, early stage researchers. We welcome contributions from diverse areas of public health-related research focused on ethnicity and health. Example areas include: epidemiology, medical care, health informatics and information technology, health administration, community

health, pharmacy, nursing, and social work.

We are particularly interested in rigorous studies that have the potential to advance our understanding of current topics related to ethnicity and population health.

**Abstracts are due Friday, January 6th, 2020.**

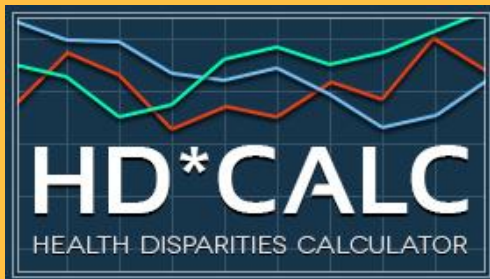
For more information, please visit the following [website](#).



The HRSA seeks to ensure that underserved communities have well-trained, diverse health care providers to deliver and facilitate needed care. HRSA programs support providers with direct patient care responsibilities, as well as public health and allied health professionals and paraprofessionals who support the health and well-being of the population.

In 2019 – 2022, HRSA will focus efforts to equip and retain the health care workforce in underserved and rural communities to meet critical needs and achieve improved access to health care.

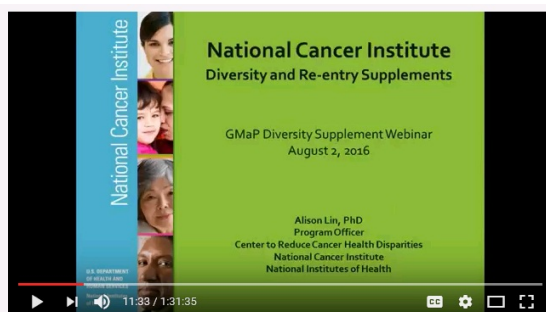
For information about HRSA Funding Opportunities, please visit the following [website](#).



To download the new Health Disparities Calculator 2.0, please visit the following [website](#).

## Health Disparities Calculator 2.0

The Health Disparities Calculator (HD\*Calc) is statistical software designed to generate multiple summary measures to evaluate and monitor health disparities (HD). HD\*Calc was created as an extension of [SEER\\*Stat](#) that allows the user to import SEER data or other population-based health data, such as National Health Survey sample data from the National Health Interview Survey (NHIS) or the Behavioral Risk Factor Surveillance System (BRFSS), and calculate any of eleven disparity measures.



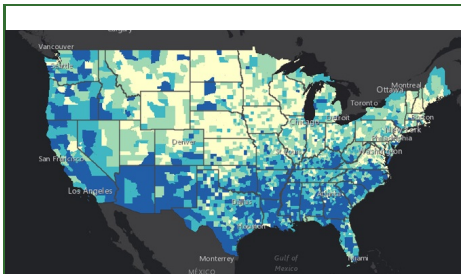
## Are you interested in a Diversity and Re-entry Supplement?

NCI Diversity supplements support the research training of students, post-baccalaureate and post-masters individuals, postdoctoral fellows, and faculty investigators who are members of an underrepresented group.

**Watch Webinar!**

Learn more about how you can become part of the next generation of competitive investigators in cancer health disparities research by participating in the diversity and re-entry

[Presentation Slides](#) [Presentation Flyer](#)



### Centers for Disease Control and Prevention Social Vulnerability Index

Social vulnerability refers to the resilience of communities when confronted by external stresses on human health, stresses such as natural or human-caused disasters, or disease outbreaks. Reducing social vulnerability can decrease both human suffering and economic loss. CDC's Social Vulnerability Index uses 15 U.S. census variables at tract level to help local officials identify communities that may need support in preparing for hazards; or recovering from disaster.

The Geospatial Research, Analysis, and Services Program (GRASP) created and maintains CDC's Social Vulnerability Index. For more information visit [here](#).

- [Cancer Health Disparities | Did You Know?](#) - NCI
- [Promoting Yourself, Your Research and the New NIH Biosketch.](#)
- [NIH Biosketch](#) - What is new in the New Biosketch?
- NIH Tips on [Writing Your Grant Application](#)
- Find Funded NIH Projects - [NIH Reporter](#)
- [Health Disparities Calculator](#) - NCI
- [Cancer Health Disparities Definitions](#) - NCI
- [Public Health Employment Connection](#) - Updated Job Opportunities Nationwide
- [Jobs @ NIH](#) - Explore jobs and training opportunities

### Connect with your GMaP Partners

#### Institution Name & Email Links

UAB at Birmingham  
 University of Arkansas - MS  
 Moffitt Cancer Center  
 University of Miami  
 Bethune Cookman University  
 Emory University  
 Florida A & M University  
 Morehouse School of Medicine  
 Xavier University of Louisiana  
 Louisiana State University  
 Tulane University  
 University of Florida

[Tiffany Carson](#)  
[Michael Preston](#)  
[Khaliah Fleming](#)  
[Erin Kobetz](#)  
[Danyell Wilson](#)  
[Theresa Gillespie](#)  
[Renee' Reams](#)  
[Roland Matthews](#)  
[Margarita Echeverri](#)  
[Lucio Miele](#)  
[Roy Weiner](#)  
[Folakemi Odedina](#)

University of Mississippi  
Washington University in St. Louis  
Ponce Health Sciences University

[Roy Duhe](#)  
[Bettina Drake](#)  
[Idhaliz Flores](#)

## Cancer Training at NCI

### STAY CONNECTED

Become a GMaP Partner and stay connected. Let us know what information you want to know, how can we better help, or if you're interested in collaboration. Do you want us to highlight your programs? Join [GMaP Region 2](#) today and let us know what information you want us to feature in our next newsletter!



GMaP | Region 2 | 813-745-6502 | [GMap.Region2@moffitt.org](mailto:GMap.Region2@moffitt.org) | [Website](#)

**You are receiving this email as a Cancer  
Researcher in GMaP Region 2**