

Geographic Management of Cancer Health Disparities Program (GMAP) Region 2

February 2020 E-Blast

GMAP is an integrated network of 7 regions across the United States. Moffitt Cancer Center in Tampa, FL serves as the hub for GMAP Region 2 which currently includes more than 40 partner institutions in Alabama, Arkansas, Florida, Georgia, Louisiana, Missouri, Mississippi and Puerto Rico.

***You are receiving this email as a Cancer
Researcher in GMAP Region 2***

**GMAP Region 2
TRAVEL AWARDS ARE AVAILABLE!**



ATTENTION: Conferences, workshops and trainings taking place after January 30th, 2020 are still eligible for the GMaP Region 2 Travel Award
GMaP Region 2 is offering travel awards to Early Stage Investigators and Trainees intended to support career development related to cancer research or cancer health disparities research. This scholarship will provide reimbursement (e.g. registration, airfare, hotel, etc.) for ESI's or Trainees to present research at conferences and attend skills workshops/trainings. Applicants must be located in a GMaP Region 2 state/territory, be a trainee or Early Stage Investigator (ESI), and submit a complete application.

To learn more and/or apply for a travel award click the link below!

[CLICK HERE](#)

Connect with GMaP Region 2 on Social Media!



[Click to Visit our GMaP Region 2 Website](#)



ADVANCING THE SCIENCE OF CANCER IN LATINOS

The Mays Cancer Center and the Institute for Health Promotion Research at UT Health San Antonio are hosting the second international conference on Advancing the Science of Cancer in Latinos on **February 26-28, 2020**, in San Antonio, Texas.

This conference comes at an especially important time when Latinos – the largest, youngest and fastest-growing minority group in the U.S. – are expected to face a 142% rise in cancer cases in coming years. Disparities continue to plague this population in access to care, risk factor behaviors, mortality, and quality of life. Our vision has been to unite researchers, scientists, physicians, healthcare professionals, patient advocates and students from across the nation and beyond, in an open dialogue, under one roof, to discuss research advancements to date, identify gaps, and develop actionable goals to translate basic research into clinical best practices, effective community interventions, and professional training programs to eliminate cancer disparities in Latinos.

We hope you will join us in February 2020 to gain a comprehensive perspective on Latino cancer health disparities, learn how you can apply some of this research and practice into your own work, and help us foster more collaboration, more research and more success in improving the health and lives of Latinos.

Registration is still open! For more information please visit the [website](#).



4th Annual Cancer Disparities Symposium: Cultivating Science and Community Engagement to Address Cancer Health Disparities

Presented by Case Comprehensive Cancer Center Office of Cancer Disparities Research, the 4th Annual Cancer Disparities Symposium will take place on **Friday, March 6, 2020** at the Tinkham Veale University Center at Case Western Reserve University in Cleveland, OH. The symposium will feature keynote presentations by renowned disparities researchers and community leaders, a poster session highlighting academic research and community programs, a networking session and an interactive panel discussion.

The Case Comprehensive Cancer Center Office of Cancer Disparities Research invites multidisciplinary researchers, community agencies and organizations to submit abstracts for presentation at the 4th Annual Cancer Disparities Symposium. Abstracts will be divided into two tracks: Scientific Research and Community Programs.

For more information please visit the [website](#).



Creative Partnerships: Working Together to Advance Health Literacy and Equity

IHA 19th Annual Health Literacy Conference

May 13-15, 2020 | Hilton Orange County | Costa Mesa

19th Annual Health Literacy Conference

Institute for Healthcare Advancement's Annual Health Literacy Conference draws participants from around the world to discuss practical health literacy solutions. Whether you work directly with the public or behind the scenes, in patient education or in research, at a small non-profit or a large corporation – there's something for everyone.

Health literacy must become an integral component of all health programs, quality improvement initiatives, and cost containment efforts to achieve successful outcomes for everyone. This important event happens just once a year. Take this opportunity to experience IHA's Annual Health Literacy Conference. The conference will be held at the Hilton Orange County in Costa Mesa, CA from **Wednesday, May 13th - Friday, May 15th, 2020**

For more information please visit the [website](#).



International Cancer Education Conference

*Using Cancer Education to Address
Social Determinants of Health*

14-16 October 2020 • College Park, Maryland, USA

The 2020 International Cancer Education Conference (ICEC) will be held in College Park, Maryland, from **Wednesday, October 14th – Friday, October 16th, 2020**. The 2020 conference plans to draw in more than 250 educators, physicians, nurses, public health professionals, researchers, students and social workers from around the world. Continuing Education credits will be provided for physicians, nurses, CHES professionals, and social workers.

The 2020 International Cancer Education Conference invites abstracts for Preconference Workshops, Oral Presentations, Poster Presentations, and Symposia/Panels that emphasize cancer education curricula, programs and/or initiatives across the cancer continuum, in relation to the conference theme, *Using Cancer Education to Address Social Determinants of Health*.

Workshop Abstract Submission Deadline: 16 March 2020
Oral/Poster/Symposium Abstract Submission Deadline: 6 April 2020
For more information please visit the [website](#).

[2020 William G. Coleman Jr., PhD., Minority Health and Disparities
Research Innovation Awardees Announced](#)

TRAINING OPPORTUNITIES

NCI CRCHD Professional Development Workshop and Mock Review

SAVE THE DATE June 8–9, 2020

Bethesda North Marriott Hotel and Conference Center

The National Cancer Institute (NCI) Center to Reduce Cancer Health Disparities (CRCHD) will host its annual 2020 Professional Development Workshop and Mock Review (PDW & MR) on Monday, June 8, and Tuesday, June 9, 2020. The 2020 PDW & MR will be held at the Bethesda North Marriott Hotel and Conference Center in Rockville, Maryland.

The purpose of the PDW & MR is to share information and experiences with recipients of CRCHD training awards and to assist with career development and advancement in cancer and cancer health disparities research.

CRCHD-supported graduate students, postdocs, and early-career investigators are strongly encouraged to attend. As a reminder, K awardees are required to attend the PDW & MR at least two times during the duration of their award.

For questions regarding the Program, please contact CRCHD Program Directors Dr. John Ojeifo, ojeifo@mail.nih.gov, or Dr. Jessica Calzola, Jessica.calzola@nih.gov.

**UT THE UNIVERSITY OF TENNESSEE
HEALTH SCIENCE CENTER**

Transdisciplinary Community-Based Participatory Research Training Workshop

Featuring 12 nationally-recognized experts in Community-Based Participatory Research (CBPR), this state-of-the-art, 2 ½ day workshop is geared especially for early stage investigators from various research and/or clinical backgrounds as well as researchers and clinicians more advanced in their career who want to further hone their community engagement skills. The workshop will be held at the University of Tennessee Health Science Center (UTHSC) in Memphis, TN from **Thursday, June 11- Saturday, June 13, 2020**.

As part of the workshop, trainees will learn how to create and sustain community partnerships in order to meaningfully impact cancer health disparities. In addition, trainees will have the opportunity to dialogue with nationally-recognized experts in CBPR who will present on a variety of CBPR components and discuss exemplars in CBPR research across the cancer continuum. In addition, trainees will have the opportunity to develop their own study ideas and receive feedback from CBPR experts. Trainees will engage in experiential learning and also will have the opportunity to tour the National Civil Rights Museum. Finally, trainees will be paired with a research mentor through the National Institutes of Health (NIH)-funded National Research Mentoring Network (NRMN) for continued research mentorship for 1 year following the workshop. The overall vision of this workshop is to equip trainees with the knowledge and skills needed to submit a grant application by Fall 2021.

Applications will be accepted through March 1, 2020.
Registration is limited to 50 trainees, so applying early is encouraged.
For more information please visit the [website](#).



The National Institute on Minority Health and Health Disparities (NIMHD) will host the next Health Disparities Research Institute (HDRI) from August 3 to 7, 2020.

The HDRI aims to support the research career development of promising early-career minority health/health disparities research scientists, and stimulate research in the disciplines supported by health disparities science. Applications will only be accepted from individuals who meet NIH's Early Stage Investigator (ESI) eligibility criteria.

Click [here](#) to sign up for NIMHD updates to receive notices about the course, application cycle and other announcements.

For more information please visit the [website](#).

AWARDS - SCHOLARSHIPS - INTERNSHIPS



The Developing Skills for Grant Writing and Peer Review Workshop will equip early career STEM professionals, in either biology or STEM education, to write a successful grant proposal for NSF funding. Accepted applicants will learn how to critique proposal drafts in order to develop their own drafts and engage in peer review.

To apply, applicants must:

- Be an advanced graduate student, current postdoc or early career professional in biology or STEM education
- Bring idea for grant proposal for either the BIO or EHR directorates at NSF
- Submit current resume/CV

Accepted applicants will receive airfare to and from the DC area, and lodging for 2 nights.

Workshop Dates: May 1-3, 2020

Location: Washington DC Area

Application Deadline: February 21, 2020

For more information please visit the [website](#).

Save the dates:
June 7-19

2020

Tribal Researchers' Cancer Control Fellowship Program

The overall goal of the Tribal Researchers' Cancer Control Fellowship Program is to reduce cancer incidence and mortality and improve cancer survival in tribal communities through the efforts of AI/AN researchers. This fellowship program offers training and mentorship to prepare researchers to design and implement cancer-related research projects within AI/AN communities. Costs associated with the training, including travel, will be covered.

Who can apply:

American Indian/Alaska Native graduate students and researchers with a demonstrated interest in cancer prevention and control.

Accepted Fellows will:

- attend three-weeks of tailored cancer control research training held at the Northwest Portland Area Indian Health Board in Portland, Oregon. The first two weeks will be June 7th-19th, 2020 followed by a one-week session in the fall.
- receive follow-up support, including field support, distance learning opportunities, and mentoring.
- be eligible for paid cancer control research internships to master additional research skills relevant to careers in community-based cancer control under close mentorship.
- be connected to a network of experts in cancer control and prevention in Indian Country.

Applications are due March 13, 2020. To apply please click [here](#).

For more information please click [here](#) or contact Ashley Thomas at athomas@npaihb.org.



Brain Expansion Scholastic Training

Brain Expansions Scholastic Training, Inc. is a vital 501(c)(3) nonprofit organization that attempts to moderate the negative impacts of apathy and lack of available educational services on the underserved youth population of Tampa, Florida and beyond.

The 2020 B.E.S.T. Summer Medical Academy is a unique experience for high school sophomores, juniors and seniors interested in a medical careers. Students engage in hands-on experiences in the field of health with actual healthcare professionals. We help students prepare for a career as future health professionals.

If you are in high school and have an interest in being a doctor, nurse, pharmacist, dentist, physician assistant or another medical professional this program is worth applying to.

As a part of the program, you will...

- Experience the anatomy of the human body
- Observe how to scrub for surgery
- Practice hands hygiene in a clinical setting
- Engage in the screening of vital signs
- Practice suturing skills used to suture wounds

Open Enrollment closes on March 15, 2020 at 11:59 PM.

For more information please visit the [website](#).



AACR Educational Workshops and Professional Development Opportunities

The American Association for Cancer Research (AACR) is the oldest and largest scientific organization in the world focused on every aspect of high-quality, innovative cancer research. Committed to building and training a diverse cancer research workforce, the AACR invests in the training of the next generation of cancer researchers and early-career investigators by offering the following Educational Workshops in 2020.

AACR/ASCO Methods in Clinical Cancer Research Workshop (Vail, CO) *

Clinical fellows and junior faculty level clinical investigators will learn the essentials of effective clinical trial design and discuss the full spectrum of challenges and opportunities in clinical cancer research.

Application deadline: Tuesday, March 17, 2020

For more information please click [here](#) or contact Kathryn Leonard at kathryn.leonard@aacr.org

Molecular Biology in Clinical Oncology Workshop (Snowmass Village, CO) *

Physicians or clinical oncology fellows in any subspecialty with the intent of a career as a physician-scientist will be guided in the principles of designing scientific experiments based on examples from faculty, grant writing, and hands-on laboratory techniques.

Application deadline: Monday, March 30, 2020

For more information please click [here](#) or contact Amy Baran at amy.baran@aacr.org

Integrative Molecular Epidemiology Workshop: Bridging Cancer Biology and Precision Medicine (Boston, MA) *

Molecular epidemiologists, geneticists, statisticians, bioinformaticians, molecular biologists, physician-scientists, and others who have completed basic coursework in epidemiology will be trained in the integration of biology and epidemiology in studies of cancer etiology and disease outcome.

Application deadline: Monday, April 13, 2020

For more information please click [here](#) or contact Shakira Nelson at shakira.nelson@aacr.org

Translational Cancer Research for Basic Scientists Workshop (Boston, MA)

Basic scientists at the pre- or postdoctoral level and early-career scientists will gain an in-depth understanding of translational research, enabling the adaptation of their research for maximum clinical impact and transition into translational cancer medicine.

Application deadline: Thursday, May 7, 2020

For more information please click [here](#) or contact Lyngine Calizo at lyngine.calizo@aacr.org

Scientist Mentoring & Diversity Program

The Scientist Mentoring & Diversity Program (SMDP) is accepting applications for the 2020 SMDP. Ethnically diverse university students and recent graduates in technical fields are invited to apply (Hispanic Americans, Pacific Islanders, African Americans and American Indians). To qualify, applicants must be interested in a career in biotechnology, medical technology or consumer healthcare industries and seek to receive career mentoring and training from industry leaders.

Applications will be accepted through April 30, 2020.

For more information please visit the [website](#).



DEBUT

Design by Biomedical Undergraduate Teams (DEBUT) Challenge

The National Institute of Biomedical Imaging and Bioengineering (NIBIB) and VentureWell are challenging undergraduate student teams to develop technology solutions to unmet needs in any area of healthcare. Two NIH partners, NIH Office of AIDS Research and the National Institute of Minority and Health Disparities, are providing a prize each for 1.) technologies for HIV/AIDS prevention and/or care, and 2.) technologies for underrepresented populations and/or for low-resource settings.

Applications will be accepted through June 1, 2020, 11:59 PM EDT.
For more information please visit the [website](#).

EMPLOYMENT OPPORTUNITIES

(NEW) [Post-Doctoral Fellow](#), Division of Health Equities, Beckman Research Institute, City of Hope Medical Center

[Faculty Member](#), Department of Health Behavior and Policy, Virginia Commonwealth University

[Faculty Member](#), Department of Health Outcomes & Behavior, H. Lee Moffitt Cancer Center & Research Institute

[Health Economist](#), Healthcare Assessment Research Branch, National Cancer Institute

[Medical Officer](#), Health Systems and Interventions Research Branch, National Cancer Institute

[USAJOBS - Various Positions](#),
Varying locations, Domestic & International



COMMISSIONED CORPS OF THE U.S. PUBLIC HEALTH SERVICE

America's Health Responders

The Commissioned Corps is accepting applications for all professional categories for applicants who must be willing to serve where the needs of the service dictate or within the organizations that provide clinical care services listed below.

- Indian Health Service
- Federal Bureau of Prisons
- Department of Homeland Security
 - U.S. Coast Guard
 - Immigration Health Service Corps
- National Institutes of Health
- Federal Occupational Health
- Department of Interior/National Park Service, Clinical Site
- Department of Defense/Defense Health Agency

- U.S. Department of Veterans Affairs/Veterans Health Administration

We are emphasizing our recruiting for the following categories: Medical officers, Veterinary officers, Dental officers, and Nurse Practitioners officers. Inter-service Transfers and Former Commissioned Corps officers, including former JRCOSTEPs, are also encouraged to apply.

To apply please visit the [website](#), contact the Call Center at 1-888-225-3302 or direct your questions to cchelpdesk@hhs.gov.

FUNDING OPPORTUNITIES



The Food and Drug Administration (FDA) solicits for advanced research and development proposals to support regulatory science and innovation. The FDA anticipates that research and development activities under this Broad Agency Announcement (BAA) will serve to advance scientific knowledge to accomplish its mission to protect and promote the health of our nation.

For more information please visit the [website](#).

NIMHD Supports the Research Centers in Minority Institutions (RCMI) Program

NIMHD is supporting an upcoming funding opportunity under the Research Centers in Minority Institutions (RCMI) program. Funding will support specialized research centers in institutions that offer doctoral degrees in the health professions or health-related sciences and have a commitment to educating students from underrepresented populations and in institutions that provide health care services to medically underserved communities.

NIMHD encourages investigators to participate in this important public health activity and welcomes inquiries concerning this funding opportunity. Review the upcoming funding opportunity announcement (FOA) for more information on eligibility and application submissions.

Estimated Publication Date of FOA: February 14, 2020

Estimated Deadline: April 14, 2020

For more information please visit the [website](#).



The HRSA seeks to ensure that underserved communities have well-trained, diverse health care providers to deliver and facilitate needed care. HRSA programs support providers with direct patient care responsibilities, as well as public health and allied health professionals and paraprofessionals who support the health and well-being of the population.

In 2019 – 2022, HRSA will focus efforts to equip and retain the health care workforce in underserved and rural communities to meet critical needs and achieve improved access to health care.

For information about HRSA Funding Opportunities, please visit the following [website](#).

[Research Career Development Awards \(K-Series\)](#) - National Institutes

of Health (NIH). **Application deadlines vary**

[NIH Loan Repayment Programs \(LRPs\)](#). **Application deadlines vary**

Administrative Supplements to Support Cancer Disparity Collaborative Research | Applications are due February 10, 2020 and September 10, 2020 | **[PA-18-842](#)**

Social Epigenomics Research Focused on Minority Health and Health Disparities (R01- Clinical Trial Not Allowed) | Applications are due November 6, 2019, November 6, 2020, November 8, 2021 | **[PAR-19-372](#)**

[Funding Your Health Equity Research in an Evolving Era: Trends and Tips from National Funding Organizations](#)

NCI Mechanisms of Disparities in Etiology and Outcomes of Lung Cancer in the US: The Role of Risk and Protective Factors (NEW) (R01 Clinical Trial Not Allowed) | Applications are due March 4, 2020; March 4, 2021 | **[PAR-19-018](#)**

NCI Mechanisms of Disparities in Etiology and Outcomes of Lung Cancer in the US: The Role of Risk and Protective Factors (NEW) (R21 Clinical Trial Not Allowed) | Applications are due March 4, 2020; March 4, 2021 | **[PAR-19-019](#)**

Looking for additional **[funding opportunities](#)**? A full list of CRCHD funding opportunities as well as select NIH opportunities is available online.

The National Cancer Institute has re-issued the **Funding Opportunity Announcement (FOA) Linking the Provider Recommendation to Adolescent HPV Vaccine Uptake (Clinical Trial Optional)** (**[PAR-19-360](#)** [R01]; **[PAR-19-359](#)** [R03] and **[PAR-19-358](#)** [R21]).

This FOA encourages research on how the health care delivery system enhances or inhibits the effectiveness of a provider's recommendation of the adolescent human papillomavirus (HPV) vaccine.

NIH Maximizing Opportunities for Scientific and Academic Independent Careers (MOSAIC)

The NIH Maximizing Opportunities for Scientific and Academic Independent Careers (MOSAIC) program is designed to facilitate the transition of promising postdoctoral researchers from diverse backgrounds, such as individuals from groups underrepresented in the biomedical research workforce at the faculty level, into independent faculty careers at research-intensive institutions.

The program has two components:

- **MOSAIC Postdoctoral Career Transition Award to Promote Diversity (K99/R00)**. Supports postdoctoral scientists from diverse backgrounds conducting research in areas within the NIGMS mission by providing up to 5 years of support in two phases. The initial (K99) phase provides support for up to 2 years of mentored postdoctoral research training and career development. The second (R00) phase provides up to 3 years of independent research support once the scholar transitions to an independent faculty position. *Awardees must be US Citizens or Permanent Residents*. For more information see: **[PAR-19-343](#)**. Please note, the first application deadline is **February 12, 2020**. **Intramural postdocs are eligible for this award.**

- MOSAIC Institutionally-Focused Research Education Cooperative Agreement to Promote Diversity (UE5). Supports scientific societies whose members conduct research within the NIGMS mission. Awardees will provide skills development, mentoring, and networking opportunities that prepare cohorts of scholars supported by MOSAIC K99/R00 awards to transition into, succeed, and advance in independent faculty careers at research-intensive institutions. For more information see: [PAR-19-342](#).

Notice of Special Interest (NOSI): NCI's Research Interests to Improve Interprofessional Teamwork and Coordination During Cancer Diagnosis and Treatment

This [NOSI](#) highlights the Healthcare Delivery Research Program's interest in receiving investigator-initiated grant applications focused on understanding and improving interprofessional teamwork and coordination during cancer diagnosis and treatment.

Research encouraged through this NOSI includes, but is not limited to, studies that

- Identify modifiable features of **care team structure** (e.g., care team composition or organization), associated with differences in cancer care quality and patient outcomes.
- Identify modifiable features of **care team processes** (e.g., decision making, communication, coordination behaviors, collaboration, leadership) associated with differences in cancer care quality and patient outcomes.
- Identify **characteristics at the patient, caregiver, care team, delivery organization, health system, and/or community levels** that influence the functioning and effectiveness of interprofessional cancer care teams.
- Develop and test interventions designed to improve cancer care quality and patient outcomes by **modifying the structure and/or functioning** of interprofessional teams.
- Develop and test interventions designed to improve cancer care quality and patient outcomes by **engaging patients and caregivers** as members of their cancer care team.

Application and Submission Information

This NOSI applies to due dates on or after **September 25, 2019 through January 8, 2022**. Applications related to this NOSI may be submitted using the following funding opportunity announcements or future reissuances:

- [PAR-18-869](#) Modular R01s in Cancer Control and Population Sciences (R01 Clinical Trial Optional)
- [PAR-18-559](#) Cancer Prevention and Control Clinical Trials Grant Program (R01 Clinical Trial Required)
- [PA-19-056](#) NIH Research Project Grant (Parent R01 Clinical Trial Not Allowed)
- [PAR-18-290](#) National Cancer Institute Program Project Applications (P01 Clinical Trial Optional)

BEST PRACTICES & RESOURCES

Introducing eMENTORING



Given the break-neck speed of technical advancements, there's no doubt that Science, Technology, Engineering, and Math (STEM) curriculums are the foundation for the future. In fact, 80% of future U.S. professions will require STEM expertise.

The Problem

But U.S. children—especially girls and minorities—are being left behind when it comes to studying and finding success in the world of STEM.

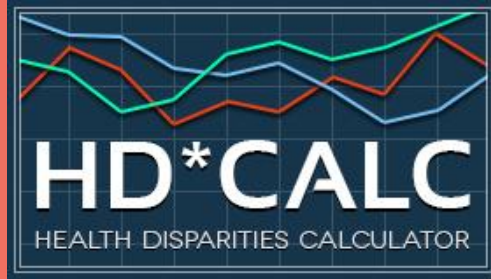
Mentoring: Pros and Cons

Adults who mentor school-age children have proven to be one of the most valuable and effective development opportunities available in any environment—academic, professional, and even personal. And adults in STEM-based professions who can share real-life experiences with at-risk children can have a drastic effect on increasing a child's interest in pursuing a STEM-based educational path. Historically, however, mentoring comes with numerous logistical challenges such as cost, travel, coordination, and time. This has led to a decrease in resources willing to provide support at the same time there has been a drastic increase in the need for help.

The Solution: eMentoring

e-Mentoring is an effective and efficient solution which eliminates the obstacles that were previously faced. e-Mentoring pairs students in under-resourced areas with a volunteer using web-based technology so neither party is constrained by time, travel, expense, and coordination. They share STEM-based projects or reading assignments, communicate online via a secure platform, and exchange ideas, feedback, and support.

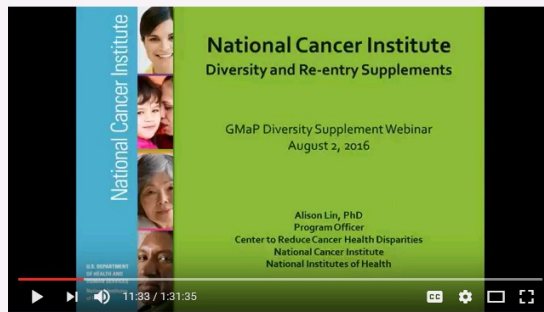
To learn more about e-Mentoring, download this [free e-book](#) that highlights some vital stats around the need for this important program and see how easy it is to get involved.



To download the new Health Disparities Calculator 2.0, please visit the following [website](#).

Health Disparities Calculator 2.0

The Health Disparities Calculator (HD*Calc) is statistical software designed to generate multiple summary measures to evaluate and monitor health disparities (HD). HD*Calc was created as an extension of SEER*Stat that allows the user to import SEER data or other population-based health data, such as National Health Survey sample data from the National Health Interview Survey (NHIS) or the Behavioral Risk Factor Surveillance System (BRFSS), and calculate any of eleven disparity measures.



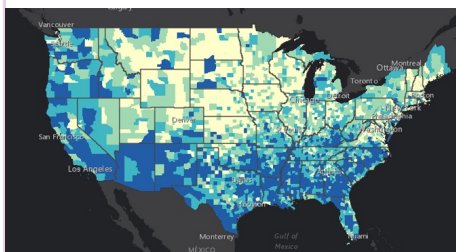
Watch Webinar!

[Presentation Slides](#) [Presentation Flyer](#)

Are you interested in a Diversity and Re-entry Supplement?

NCI Diversity supplements support the research training of students, post-baccalaureate and post-masters individuals, postdoctoral fellows, and faculty investigators who are members of an underrepresented group.

Learn more about how you can become part of the next generation of competitive investigators in cancer health disparities research by participating in the diversity and re-entry supplements!



Centers for Disease Control and Prevention Social Vulnerability Index

Social vulnerability refers to the resilience of communities when confronted by external stresses on human health, stresses such as natural or human-caused disasters, or disease outbreaks. Reducing social vulnerability can decrease both human suffering and economic loss. CDC's Social Vulnerability Index uses 15 U.S. census variables at tract level to help local officials identify communities that may need support in preparing for hazards; or recovering from disaster.

The Geospatial Research, Analysis, and Services Program (GRASP) created and maintains CDC's Social

- [Cancer Health Disparities | Did You Know?](#) - NCI
- [Promoting Yourself, Your Research and the New NIH Biosketch.](#)
- [NIH Biosketch](#) - What is new in the New Biosketch?
- NIH Tips on [Writing Your Grant Application](#)
- Find Funded NIH Projects - [NIH Reporter](#)
- [Health Disparities Calculator](#) - NCI
- [Cancer Health Disparities Definitions](#) - NCI
- [Public Health Employment Connection](#) - Updated Job Opportunities Nationwide
- [Jobs @ NIH](#) - Explore jobs and training opportunities

Connect with your GMaP Partners

Institution Name & Email Links

UAB at Birmingham
University of Arkansas - MS
Moffitt Cancer Center
University of Miami
Bethune Cookman University
Emory University
Florida A & M University
Morehouse School of Medicine
Xavier University of Louisiana
Louisiana State University
Tulane University
University of Florida
University of Mississippi
Washington University in St. Louis
Ponce Health Sciences University

[Tiffany Carson](#)
[Michael Preston](#)
[Khaliah Fleming](#)
[Erin Kobetz](#)
[Danyell Wilson](#)
[Theresa Gillespie](#)
[Renee' Reams](#)
[Roland Matthews](#)
[Margarita Echeverri](#)
[Lucio Miele](#)
[Roy Weiner](#)
[Folakemi Odedina](#)
[Roy Duhe](#)
[Bettina Drake](#)
[Idhaliz Flores](#)

Cancer Training at NCI

STAY CONNECTED

Become a GMaP Partner and stay connected. Let us know what information you want to know, how can we better help, or if you're interested in collaboration. Do you want us to highlight your programs? Join [GMaP Region 2](#) today and let us know what information you want us to feature in our next newsletter!



**You are receiving this email as a Cancer
Researcher in GMap Region 2**