

## **Geographic Management of Cancer Health Disparities Program (GMaP) Region 2**

**November 2019 E-Blast**

---

GMaP is an integrated network of 7 regions across the United States. Moffitt Cancer Center in Tampa, FL serves as the hub for GMaP Region 2 which currently includes more than 40 partner institutions in Alabama, Arkansas, Florida, Georgia, Louisiana, Missouri, Mississippi and Puerto Rico.

---

***You are receiving this email as a Cancer  
Researcher in GMaP Region 2***

---

**GMaP Region 2  
TRAVEL AWARDS ARE NOW AVAILABLE!**

---



**GMaP Region 2 is offering travel awards to Early Stage Investigators and Trainees intended to support career development related to cancer research or cancer health disparities research. This scholarship will provide reimbursement (e.g. registration, airfare, hotel, etc.) for ESI's or Trainees to present research at conferences and attend skills workshops/trainings. Applicants must be located in a GMaP Region 2 state/territory, be a trainee or Early Stage Investigator (ESI), and submit a complete application.**

**To learn more and/or apply for a travel award click the link below!**

**CLICK HERE**

---

**Connect with GMaP Region 2 on Social Media!**



**Click to Visit our GMaP Region 2 Website**

---

# UPCOMING EVENTS

## 12th Annual Conference on the Science of Dissemination and Implementation in Health

Co-hosted by the National Institutes of Health and AcademyHealth

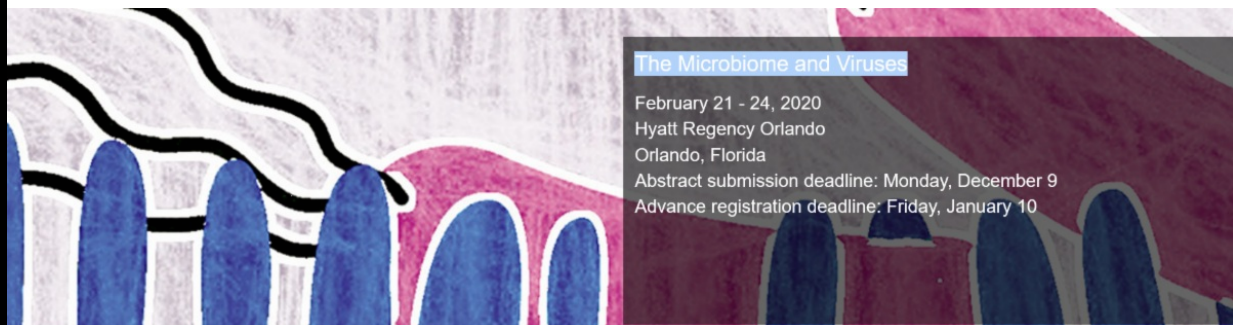
December 4-6, 2019 | Crystal Gateway Marriott, Arlington, VA



From **Wednesday, December 4 - Friday, December 6, 2019**, the Annual Conference on the Science of Dissemination and Implementation in Health (D&I), co-hosted by the National Institutes of Health (NIH) and AcademyHealth, will help realize the full potential of evidence to optimize health and health care by bridging the gap between research, practice, and policy. By outlining the priorities in the field, the Science of D&I Conference aims to ensure that evidence is used to inform decisions that will improve the health of individuals and communities.

This year's conference theme, Raising the Bar on the Rigor, Relevance, and Rapidity of Dissemination and Implementation Science, is intended to help us map the way forward for improvements in the development, execution and application of D&I science.

For more information please visit the [website](#).



### The Microbiome and Viruses

February 21 - 24, 2020  
Hyatt Regency Orlando  
Orlando, Florida  
Abstract submission deadline: Monday, December 9  
Advance registration deadline: Friday, January 10

## The Microbiome and Viruses

This conference will take place from **Friday, February 21 - Monday, February 24** at the Hyatt Regency Orlando in Orlando, Florida. The conference aims to illuminate the impact of the microbiome on cancers and cancer therapy will also be discussed. The study of the microbiota and its effects on cancer have transformed how we examine therapies and relationships with the immune system. Tumor microenvironments, and the associated tumor microbiota, have also played a role in individualized immunotherapy, and the development of novel therapeutics. This conference will cover a wide range of topics including the role of the microbiota in metabolism and immunity, oncogenic viruses, and the microbiota in cancer prevention and therapy.

**Abstract Submission and Award Application Deadline: Monday, Dec. 9, 2019, 11:59 p.m. ET**  
Advance Registration Deadline: Friday, Jan. 10, 2020, 11:59 p.m. ET

For more information please visit the [website](#).



## ADVANCING THE SCIENCE OF CANCER IN LATINOS

The Mays Cancer Center and the Institute for Health Promotion Research at UT Health San Antonio are hosting the second international conference on Advancing the Science of Cancer in Latinos on **February 26-28, 2020**, in San Antonio, Texas.

This conference comes at an especially important time when Latinos – the largest, youngest and fastest-growing minority group in the U.S. – are expected to face a 142% rise in cancer cases in coming years. Disparities continue to plague this population in access to care, risk factor behaviors, mortality, and quality of life. Our vision has been to unite researchers, scientists, physicians, healthcare professionals, patient advocates and students from across the nation and beyond, in an open dialogue, under one roof, to discuss research advancements to date, identify gaps, and develop actionable goals to translate basic research into clinical best practices, effective community interventions, and professional training programs to eliminate cancer disparities in Latinos.

We hope you will join us in February 2020 to gain a comprehensive perspective on Latino cancer health disparities, learn how you can apply some of this research and practice into your own work, and help us foster more collaboration, more research and more success in improving the health and lives of Latinos.

For more information please visit the [website](#).



### **4th Annual Cancer Disparities Symposium: Cultivating Science and Community Engagement to Address Cancer Health Disparities**

Presented by Case Comprehensive Cancer Center Office of Cancer Disparities Research, the 4th Annual Cancer Disparities Symposium will take place on **Friday, March 6, 2020** at the Tinkham Veale University Center at Case Western Reserve University in Cleveland, OH. The symposium will feature keynote presentations by renowned disparities researchers and community leaders, a poster session highlighting academic research and community programs, a networking session and an interactive panel discussion.

The Case Comprehensive Cancer Center Office of Cancer Disparities Research invites multidisciplinary researchers, community agencies and organizations to submit abstracts for presentation at the 4th Annual Cancer Disparities Symposium. Abstracts will be divided into two tracks: [Scientific Research](#) and [Community Programs](#).

Meritorious abstracts will be selected for oral presentations.  
**Abstracts must be submitted electronically by 5 pm ET on Tuesday, December 3, 2019.**

# THE UNIVERSITY OF TENNESSEE HEALTH SCIENCE CENTER

## Transdisciplinary Community-Based Participatory Research Training Workshop

Featuring 12 nationally-recognized experts in Community-Based Participatory Research (CBPR), this state-of-the-art, 2 ½ day workshop is geared especially for early stage investigators from various research and/or clinical backgrounds as well as researchers and clinicians more advanced in their career who want to further hone their community engagement skills. The workshop will be held at the University of Tennessee Health Science Center (UTHSC) in Memphis, TN from **Thursday, June 11- Saturday, June 13, 2020**.

As part of the workshop, trainees will learn how to create and sustain community partnerships in order to meaningfully impact cancer health disparities. In addition, trainees will have the opportunity to dialogue with nationally-recognized experts in CBPR who will present on a variety of CBPR components and discuss exemplars in CBPR research across the cancer continuum. In addition, trainees will have the opportunity to develop their own study ideas and receive feedback from CBPR experts. Trainees will engage in experiential learning and also will have the opportunity to tour the National Civil Rights Museum. Finally, trainees will be paired with a research mentor through the National Institutes of Health (NIH)-funded National Research Mentoring Network (NRMN) for continued research mentorship for 1 year following the workshop. The overall vision of this workshop is to equip trainees with the knowledge and skills needed to submit a grant application by Fall 2021.

**Applications will be accepted through March 1, 2020.**

Registration is limited to 50 trainees, so applying early is encouraged.

For more information please visit the [website](#).

## AWARDS/SCHOLARSHIPS/INTERNSHIPS



The [Medical Research Scholars Program](#) endeavors to be the premier training program for future clinician-scientists that advances health by inspiring careers in biomedical research. By engaging students in basic, clinical, or translational research investigations, a curriculum rich in didactics and professional development, and a robust mentorship and advising program, MRSP prepares its Scholars to become tomorrow's leaders in medicine and biomedical research.

The 12 month program is designed for students who are U.S. citizens and permanent residents who have a strong interest in conducting basic, clinical, translational, population health research and are currently enrolled in their 2nd, 3rd, or 4th year at an accredited medical, dental, or veterinary program.

The application cycle for the 2020–2021 program is from **October 1, 2019 to January 10, 2020**. For application details, please click [here](#).



**The Tribal Researchers' Cancer Control Fellowship Program is recruiting a third cohort!**

The overall goal of the Tribal Researchers' Cancer Control Fellowship Program is to reduce cancer incidence and mortality and improve cancer survival in tribal communities through the efforts of AI/AN researchers. This fellowship program offers training and mentorship to prepare researchers to design and implement cancer-related research projects within AI/AN communities. Costs associated with the training, including travel will be covered.

For more information please see the following [flyer](#).



### **Cancer Prevention & Control Research Training Program**

The Cancer Prevention and Control (CAPAC) Research Training Program at the Division of Cancer Control and Population Sciences of the University of Puerto Rico Comprehensive Cancer Center (UPRCCC) aims to increase the pool of master's degree graduates and other health professionals to pursue a doctoral degree and/or a career in cancer prevention and control research with a focus on Hispanic health and health disparities. The long-term goal of this Program is to contribute to the development of the next generation of successful cancer control researchers with a cultural sensitivity to the Hispanic population.

For more information please visit the [website](#).

**[Research Career Development Awards \(K-Series\)](#) - National Institutes of Health (NIH). [Application deadlines vary](#)**

**[NIH Loan Repayment Programs \(LRPs\)](#). [Application deadlines vary](#)**

## **EMPLOYMENT OPPORTUNITIES**

**(NEW) [Faculty Member](#)**, Department of Health Outcomes & Behavior, H. Lee Moffitt Cancer Center & Research Institute

**(NEW) [Postdoctoral Scholar in Health Inequities](#)**, Center for Health Outcomes and Population Equity (Center for HOPE), University of Utah

**(NEW) [Postdoctoral Fellow](#)**, Brown School and the Division of Public Health Sciences, Washington University in St. Louis and Siteman Cancer Center

**(NEW) [Clinical Assistant or Associate Professor](#)**, School of Public Health and Health Professions, University at Buffalo

**(NEW) [Postdoctoral Fellow](#)**, Division of Population Science, H. Lee Moffitt Cancer Center & Research Institute

**(NEW) [Postdoctoral Fellow](#)**, Center for Health Behavior Research,  
University of Pennsylvania

**[Postdoctoral Fellow](#)**, Department of Medical Social Sciences, Robert H.  
Lurie Comprehensive Cancer Center, Northwestern University

**[Health Economist](#)**, Healthcare Assessment Research Branch, National  
Cancer Institute

**[Medical Officer](#)**, Health Systems and Interventions Research  
Branch, National Cancer Institute

**[Lecturer in Public Health](#)**, Baylor Public Health, Baylor University

**[Associate Professor of Epidemiology](#)**, Baylor Public Health, Baylor  
University

**[Associate Professor or Assistant Professor](#)**, Community Psychology or  
Applied Social Psychology, University of Massachusetts Lowell

**[Global Health Technical Positions \(USAID\) - Humanitarian Health Advisor](#)**  
Office of U.S. Foreign Disaster Assistance, Washington, D.C.

**[Yale University Cancer Outcomes Faculty Position](#)** Yale Cancer  
Outcomes, Public Policy and Effectiveness Research (COPPER) Center

**[San Diego State University Associate Professor/Professor Position](#)** San  
Diego State University School of Public Health

**[University of Kentucky Open-Rank Tenure-Faculty Positions](#)** Center for  
Health Equity Transformation (CHET), College of Medicine at the  
University of Kentucky

**[Tenure-track Faculty Position: Cardiovascular Disease Epidemiology and  
Related Fields-Department of Epidemiology and Population Health](#)**,  
Department of Epidemiology and Population Health, Albert Einstein  
College of Medicine

**[Health Scientist](#)**, Centers for Disease Control and Prevention

**[Epidemiologist](#)**, Centers for Disease Control and Prevention

**[Public Health Analyst](#)**, Centers for Disease Control and Prevention

---

## FUNDING RESOURCES & OPPORTUNITIES

**Social Epigenomics Research Focused on Minority Health and Health  
Disparities (R01- Clinical Trial Not Allowed)** | Applications are due  
November 6, 2019, November 6, 2020, November 8, 2021| [PAR-19-372](#)

**[Funding Your Health Equity Research in an Evolving Era: Trends and  
Tips from National Funding Organizations](#)**

**NCI Mechanisms of Disparities in Etiology and Outcomes of Lung Cancer  
in the US: The Role of Risk and Protective Factors (NEW) (R01 Clinical  
Trial Not Allowed)** | Applications are due March 4, 2020; March 4, 2021|

**NCI Mechanisms of Disparities in Etiology and Outcomes of Lung Cancer in the US: The Role of Risk and Protective Factors (NEW) (R21 Clinical Trial Not Allowed)** | Applications are due March 4, 2020; March 4, 2021 |

[PAR-19-019](#)

Looking for additional [funding opportunities](#)? A full list of CRCHD funding opportunities as well as select NIH opportunities is available online.

## NIH Maximizing Opportunities for Scientific and Academic Independent Careers (MOSAIC)

The NIH Maximizing Opportunities for Scientific and Academic Independent Careers (MOSAIC) program is designed to facilitate the transition of promising postdoctoral researchers from diverse backgrounds, such as individuals from groups underrepresented in the biomedical research workforce at the faculty level, into independent faculty careers at research-intensive institutions.

The program has two components:

- MOSAIC Postdoctoral Career Transition Award to Promote Diversity (K99/R00). Supports postdoctoral scientists from diverse backgrounds conducting research in areas within the NIGMS mission by providing up to 5 years of support in two phases. The initial (K99) phase provides support for up to 2 years of mentored postdoctoral research training and career development. The second (R00) phase provides up to 3 years of independent research support once the scholar transitions to an independent faculty position. *Awardees must be US Citizens or Permanent Residents.* For more information see: [PAR-19-343](#). Please note, the first application deadline is **February 12, 2020**. **Intramural postdocs are eligible for this award.**
- MOSAIC Institutionally-Focused Research Education Cooperative Agreement to Promote Diversity (UE5). Supports scientific societies whose members conduct research within the NIGMS mission. Awardees will provide skills development, mentoring, and networking opportunities that prepare cohorts of scholars supported by MOSAIC K99/R00 awards to transition into, succeed, and advance in independent faculty careers at research-intensive institutions. For more information see: [PAR-19-342](#). Please note the first application deadline is **November 15, 2019**.

## Notice of Special Interest (NOSI): NCI's Research Interests to Improve Interprofessional Teamwork and Coordination During Cancer Diagnosis and Treatment

This [NOSI](#) highlights the Healthcare Delivery Research Program's interest in receiving investigator-initiated grant applications focused on understanding and

improving interprofessional teamwork and coordination during cancer diagnosis and treatment.

Research encouraged through this NOSI includes, but is not limited to, studies that

- Identify modifiable features of **care team structure** (e.g., care team composition or organization), associated with differences in cancer care quality and patient outcomes.
- Identify modifiable features of **care team processes** (e.g., decision making, communication, coordination behaviors, collaboration, leadership) associated with differences in cancer care quality and patient outcomes.
- Identify **characteristics at the patient, caregiver, care team, delivery organization, health system, and/or community levels** that influence the functioning and effectiveness of interprofessional cancer care teams.
- Develop and test interventions designed to improve cancer care quality and patient outcomes by **modifying the structure and/or functioning** of interprofessional teams.
- Develop and test interventions designed to improve cancer care quality and patient outcomes by **engaging patients and caregivers** as members of their cancer care team.

### Application and Submission Information

This NOSI applies to due dates on or after **September 25, 2019 through January 8, 2022**. Applications related to this NOSI may be submitted using the following funding opportunity announcements or future reissuances:

- [PAR-18-869](#) Modular R01s in Cancer Control and Population Sciences (R01 Clinical Trial Optional)
- [PAR-18-559](#) Cancer Prevention and Control Clinical Trials Grant Program (R01 Clinical Trial Required)
- [PA-19-056](#) NIH Research Project Grant (Parent R01 Clinical Trial Not Allowed)
- [PAR-18-290](#) National Cancer Institute Program Project Applications (P01 Clinical Trial Optional)

An **informational webinar** about this NOSI is being planned and will be announced soon.

## NEWS

**Early Stage Investigator (ESI) Extension Request Process Moving to eRA Commons.** NIH recognizes that a lot can happen to interrupt the ten-year eligibility window of your Early Stage Investigator (ESI) status, such as family care responsibilities, military service, medical concerns, and more. While you may currently request an extension of that ten-year period by completing an Extension Request Form, the process for requesting an extension of ESI status will soon be moving to the eRA Commons. Beginning on August 22, 2019, investigators will be able to request an extension of their ESI eligibility directly through eRA Commons via an ESI Extension request button in the Education section of their personal profile.

[Please learn more about ESI Status Extensions here](#)

## RESOURCES & TOOLS



The HRSA seeks to ensure that underserved communities have well-trained, diverse health care providers to deliver and facilitate needed care. HRSA programs support providers with direct patient care responsibilities, as well as public health and allied health professionals and paraprofessionals who support the health and well-being of the population.

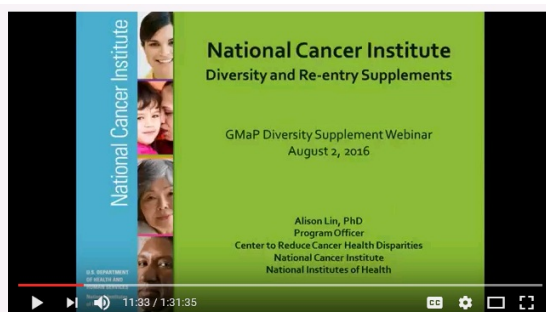
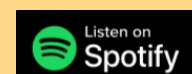
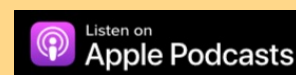
In 2019 – 2022, HRSA will focus efforts to equip and retain the health care workforce in underserved and rural communities to meet critical needs and achieve improved access to health care.

For information about HRSA Funding Opportunities, please visit the following [website](#).



### NINDS's Building Up the Nerve

Building Up the Nerve is a podcast from the National Institute of Neurological Disorders and Stroke for neuroscience trainees that takes you through the life cycle of a grant from idea to award at NINDS with the people who make it happen. We know that applying for NIH funding can be daunting, but we're here to help—it's our job!



### Are you interested in a Diversity and Re-entry Supplement?

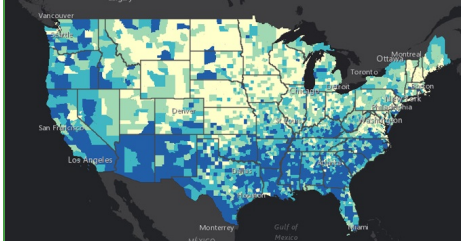
NCI Diversity supplements support the research training of students, post-baccalaureate and post-masters individuals, postdoctoral fellows, and faculty investigators who are members of an underrepresented group.

**Watch Webinar!**

[Presentation Slides](#) [Presentation Flyer](#)

Learn more about how you can become part of the next generation of competitive investigators in cancer health disparities research by participating in the diversity and re-entry supplements!

**Centers for Disease Control and Prevention Social Vulnerability Index**



Social vulnerability refers to the resilience of communities when confronted by external stresses on human health, stresses such as natural or human-caused disasters, or disease outbreaks. Reducing social vulnerability can decrease both human suffering and economic loss. CDC's Social Vulnerability Index uses 15 U.S. census variables at tract level to help local officials identify communities that may need support in preparing for hazards; or recovering from disaster.

The Geospatial Research, Analysis, and Services Program (GRASP) created and maintains CDC's Social Vulnerability Index. For more information visit [here](#).

- [Cancer Health Disparities | Did You Know?](#) - NCI
- [Promoting Yourself, Your Research and the New NIH Biosketch.](#)
- [NIH Biosketch](#) - What is new in the New Biosketch?
- NIH Tips on [Writing Your Grant Application](#)
- Find Funded NIH Projects - [NIH Reporter](#)
- [Health Disparities Calculator](#) - NCI
- [Cancer Health Disparities Definitions](#) - NCI
- [Public Health Employment Connection](#) - Updated Job Opportunities Nationwide
- [Jobs @ NIH](#) - Explore jobs and training opportunities

## Connect with your GMaP Partners

### Institution Name & Email Links

**UAB at Birmingham**  
**University of Arkansas - MS**  
**Moffitt Cancer Center**  
**University of Miami**  
**Bethune Cookman University**  
**Emory University**  
**Florida A & M University**  
**Morehouse School of Medicine**  
**Xavier University of Louisiana**  
**Louisiana State University**  
**Tulane University**  
**University of Florida**  
**University of Mississippi**  
**Washington University in St. Louis**  
**Ponce Health Sciences University**

[Tiffany Carson](#)  
[Michael Preston](#)  
[Khariah Fleming](#)  
[Erin Kobetz](#)  
[Danyell Wilson](#)  
[Theresa Gillespie](#)  
[Renee' Reams](#)  
[Roland Matthews](#)  
[Margarita Echeverri](#)  
[Lucio Miele](#)  
[Roy Weiner](#)  
[Folakemi Odedina](#)  
[Roy Duhe](#)  
[Bettina Drake](#)  
[Idhaliz Flores](#)

## STAY CONNECTED

Become a GMaP Partner and stay connected. Let us know what information you want to know, how can we better help, or if you're interested in collaboration. Do you want us to highlight your programs? Join [GMaP Region 2](#) today and let us know what information you want us to feature in our next newsletter!



GMaP | Region 2 | 813-745-6502 | [GMap.Region2@moffitt.org](mailto:GMap.Region2@moffitt.org) | [Website](#)

**You are receiving this email as a Cancer  
Researcher in GMaP Region 2**