



Geographic Management of Cancer Health  
Disparities Program (GMaP) *Region 2*  
*August 2019 E-Blast*

## You are receiving this email as a Cancer Researcher in GMaP Region 2

GMaP is an integrated network of 7 hubs across the United States. Moffitt Cancer Center in Tampa, FL serves as the hub for GMaP Region 2 (previously Region 3), which currently includes more than 40 partner institutions in Alabama, Arkansas, Florida, Georgia, Louisiana, Missouri, Mississippi and Puerto Rico.



## ATTENTION:

GMaP Region 2 Awards are *currently unavailable* at this time. GMaP Awards include: Travel Awards, Pre-Submission Expert Grant Review, Pilot Project, and Targeted Training.

---

Connect with GMaP Region 2 on Social Media!



Click to Visit our GMaP Region 2 Website

---

## Upcoming Events



### **AfroBiotech Conference October 27-29, 2019**

The AfroBiotech Conference, hosted by the Society for Biological Engineering, will highlight the achievements of African Americans in biotechnology, inspire a new generation of diverse biotechnology professionals and identify, communicate, and explore current advancements in various aspects of Biotechnology.

AfroBiotech hopes to enable the biotech industry to hire diverse professionals, inspire organizers of other scientific conferences to invite diverse speakers, and inspire the next generation of diverse students and scholars to join this community. The conference will be held in Atlanta, GA.

Abstract submission deadline is Aug. 30th. For more information please visit the [website](#).



# International Cancer Education Conference

Revolutionizing Cancer Education Globally  
Through Technology Across Generations

18-20 September 2019 • Salt Lake City, Utah, USA

Mark your calendar for the 2019 International Cancer Education Conference  
September 18-20, 2019

Salt Lake City, Utah

For more information, visit the website [here](#).

[Learn More](#)

## AWARDS/SCHOLARSHIPS/INTERNSHIPS

[Research Career Development Awards \(K-Series\)](#) - National Institutes of Health (NIH). **Application deadlines vary**

[NIH Loan Repayment Programs \(LRPs\)](#). **Application deadlines vary**

## EMPLOYMENT OPPORTUNITIES

**(NEW)** [NCI Cancer Prevention Fellowship Program](#) National Cancer Institute

**(NEW)** [2020 APHA Public Health Fellowship in Government](#) American Public Health Association

[Tenure-track Faculty Position: Cardiovascular Disease Epidemiology and Related Fields-Department of Epidemiology and Population Health](#), Department of Epidemiology and Population Health, Albert Einstein College of Medicine

[Tenure-track Faculty Position in Biochemistry and Cell Biology](#), Geisel School of Medicine, Dartmouth University

[Health Scientist](#), Centers for Disease Control and Prevention

[Epidemiologist](#), Centers for Disease Control and Prevention

[Public Health Analyst](#), Centers for Disease Control and Prevention

## FUNDING RESOURCES & OPPORTUNITIES

**(NEW)** [Funding Your Health Equity Research in an Evolving Era: Trends and Tips from National Funding Organizations](#)

NCI Mechanisms of Disparities in Etiology and Outcomes of Lung Cancer in the US: The Role of Risk and Protective Factors (NEW) (R01 Clinical Trial Not

**Allowed**) | Applications are due March 4, 2020; March 4, 2021 | [PAR-19-018](#)

**NCI Mechanisms of Disparities in Etiology and Outcomes of Lung Cancer in the US: The Role of Risk and Protective Factors (NEW) (R21 Clinical Trial Not Allowed)** | Applications are due March 4, 2020; March 4, 2021 | [PAR-19-019](#)

**NCI CRCHD Administrative Supplements to Support Cancer Disparity Collaborative Research** | Applications are due Sept. 10, 2019; Sept. 10, 2020 | [PA-18-842](#)

Looking for additional [funding opportunities](#)? A full list of CRCHD funding opportunities as well as select NIH opportunities is available online.

## Diversity Training Funding Opportunity



### Are you a **postdoctoral** or **early stage** investigator looking for funding opportunities?

The NCI Mentored Research Scientist Development Award to Promote Diversity (K01) provides cancer research career development and mentored training experience to individuals from underrepresented groups who have at least 2 years of postdoctoral experiences in the biomedical, behavioral, and clinical research fields.

#### The K01 provides:

- 3 – 5 years of salary support
- Career guidance from experienced mentors
- Protected research time (up to 75%)
- A pathway to an independent cancer research career

The NCI Center to Reduce Cancer Health Disparities (CRCHD) sponsors the K01 award as part of the [Continuing Umbrella of Research Experiences](#) (CURE) program.

You're encouraged to contact the Program Director, [Abigail Soyombo, Ph.D., M.B.A.](#), as you are developing your application. CRCHD's Training Navigator, [Hana M. Odeh, Ph.D.](#), is also available to assist you in learning more about the K01 and other funding mechanisms available through CRCHD.

### ***DID YOU KNOW?????***



Click to learn more about the [Career Award \(K\) Policy Update](#): Concurrent Support from a Mentored K Award and a Research Grant

# Diversity Training Funding Opportunity



Are you a **principal investigator** looking for supplemental funding?

The NCI Research Supplements to Promote Diversity in Health-Related Research (Diversity Supplements) support research training for underrepresented groups from high school students to investigators.

**Diversity supplements provide your trainees with:**

- Funding for salary, fringe benefits, and tuition for eligible students
- A pathway to further NCI and NIH funding opportunities
- Academic and professional support and opportunities to network with mentors, peers, and NCI Program Officers.

The NCI Center to Reduce Cancer Health Disparities (CRCHD) sponsors the Diversity Supplements as part of the [Continuing Umbrella of Research Experiences](#) (CURE) program.

Before submitting an application, you're encouraged to read the [Diversity Supplement guidelines](#) and contact the Program Director, [Dr. Alison Lin](#). CRCHD's Training Navigator, [Dr. Hana M. Odeh](#), is also available to assist you in learning more about other funding mechanisms offered by CRCHD.

## Intramural Continuing Umbrella of Research Experiences (iCURE)

**Have you heard.....** about new Intramural Continuing Umbrella of Research Experiences (iCURE) program supports mentored research experiences for qualified students and scientists in the multidisciplinary research environment of the NCI campuses in Bethesda, Rockville, and Frederick, Maryland?



Click [here](#) to learn more about iCURE.

## NEWS

**NIH launches HEAL (Helping to End Addiction Long-term) Initiative**, doubles funding to accelerate scientific solutions to stem national opioid epidemic  
National Institutes of Health Director Francis S. Collins, M.D., Ph.D., announced the launch of the HEAL (Helping to End Addiction Long-term) Initiative, an aggressive, trans-agency effort to speed scientific solutions to stem the national opioid public health crisis.

Toward this effort, NIH is nearly doubling funding for research on opioid misuse/addiction and pain from approximately \$600 million in fiscal year 2016 to \$1.1 billion in fiscal year 2018, made possible from a funding boost by Congress. NIH's efforts contribute to a government-wide push to meet the President's goal of ending the opioid crisis.

[Please learn more about HEAL initiative here](#)

**Addressing Health Disparities Through the Utilization of Health Information Technology.** Health information technology (IT) tools may serve a vital role in reducing health disparities in the clinical care setting by increasing access to care, improving quality of healthcare and by promoting better patient-clinician communication.

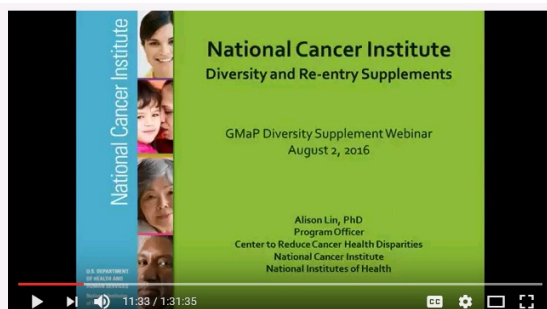
The Medical Care supplement [“Addressing Health Disparities Through the Utilization of Health Information Technology”](#) includes 12 original research papers and five editorials and commentaries. The research manuscripts report that health information technologies (e.g., electronic health records, personal health records, e-prescribing, mobile technologies) may help underserved populations by enhancing patient engagement, improving implementation of clinical guidelines, promoting patient safety, and reducing adverse outcomes. The commentaries provide expert insights on the role of health IT in promoting health equity in racial/ethnic minorities, rural and urban populations, socioeconomically disadvantaged populations, and sexual and gender minorities.

This special supplement is sponsored by the NIMHD, part of the National Institutes of Health, and has an introductory editorial led by NIMHD Director Eliseo J. Pérez-Stable, M.D., with NIMHD Health Scientist Administrator Beda Jean-François, Ph.D., and NIMHD Chief of Staff Courtney Ferrell Aklin, Ph.D.

## NIMHD Introduces *HD Pulse* - An Online Health Disparities Resource!



## RESOURCES & TOOLS



### Are you interested in a Diversity and Re-entry Supplement?

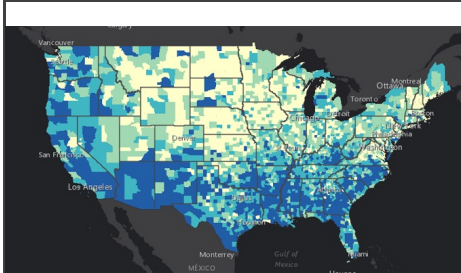
NCI Diversity supplements support the research training of students, post-baccalaureate and post-masters individuals, postdoctoral fellows, and faculty investigators who are members of an underrepresented group.

Learn more about how you can become part of the next generation of

## Watch Webinar!

competitive investigators in cancer health disparities research by participating in the diversity and re-entry supplements!

[Presentation Slides](#) [Presentation Flyer](#)



### Centers for Disease Control and Prevention Social Vulnerability Index

Social vulnerability refers to the resilience of communities when confronted by external stresses on human health, stresses such as natural or human-caused disasters, or disease outbreaks. Reducing social vulnerability can decrease both human suffering and economic loss. CDC's Social Vulnerability Index uses 15 U.S. census variables at tract level to help local officials identify communities that may need support in preparing for hazards; or recovering from disaster.

The Geospatial Research, Analysis, and Services Program (GRASP) created and maintains CDC's Social Vulnerability Index. For more information visit [here](#).

### National Research Mentoring Network: Virtual Mentoring

Students and researchers in the biomedical, behavioral, clinical, and social sciences: [Click here to access FREE virtual mentorship through NRMN!](#)



## NCTN NAVIGATOR

NCI Launches a new research resource called NCTN Navigator now available to the scientific community. Navigator is a publicly searchable database of specimens from completed National Clinical Trials Network (NCTN) phase 3 adult cancer trials. Investigators can search Navigator's inventory of high-quality specimens that are linked to clinical trials outcomes data, which is a unique aspect of this NCI-supported resource. The NCTN Navigator inventory currently has more than 600,000 specimens from 80 Clinical Trials encompassing 50,000 enrolled patients. [Please visit NCTN Navigator website here](#)

The National Library of Medicine (NLM) recently developed a series of learning tools to help consumers navigate NLM resources to become better advocates for themselves and their loved ones. The consumer health section of the program provides easy-to-use tutorials on some of our most coveted online websites. Discover the features of websites like MedlinePlus, Genetics Home Reference, Household Products Database, and [ClinicalTrials.gov](#). With the

knowledge you gain, you will be able to research diseases and other health concerns that will allow you to have more informed discussions with your physicians and other health professionals. Please [click here to visit our Public Health Resources training tools.](#)

Health Reach: Multilingual Health Information

Please visit Health Reach website that offers easy access to FREE quality multilingual, multicultural public health information for those working with or providing care to individuals with limited English proficiency (LEP). Within the site you will find culturally relevant information in several languages and formats about health conditions and wellness topics. In addition, you will discover professional resources, cultural backgrounders, clinical tools, and guidance about specific LEP populations. [Please click here to visit these resources.](#)

Visit the GMaP Group for additional [tools and resources for researchers](#), such as links to biospecimens, biorepositories, and statistician tools!

- [Cancer Health Disparities | Did You Know?](#) - NCI
- [Promoting Yourself, Your Research and the New NIH Biosketch.](#)
- [NIH Biosketch](#) - What is new in the New Biosketch?
- NIH Tips on [Writing Your Grant Application](#)
- Find Funded NIH Projects - [NIH Reporter](#)
- [Health Disparities Calculator](#) - NCI
- [Cancer Health Disparities Definitions](#) - NCI
- [Public Health Employment Connection](#) - Updated Job Opportunities Nationwide
- [Jobs @ NIH](#) - Explore jobs and training opportunities

Connect with your GMaP Partners

### Institution Name & Email Links

**UAB at Birmingham**  
**University of Arkansas - MS**  
**Moffitt Cancer Center**  
**University of Miami**  
**Bethune Cookman University**  
**Emory University**  
**Florida A & M University**  
**Morehouse School of Medicine**  
**Xavier University of Louisiana**  
**Louisiana State University**  
**Tulane University**  
**University of Florida**  
**University of Mississippi**  
**Washington University in St. Louis**  
**Ponce Health Sciences University**

[Tiffany Carson](#)  
[Michael Preston](#)  
[Khaliah Fleming](#)  
[Erin Kobetz](#)  
[Danyell Wilson](#)  
[Theresa Gillespie](#)  
[Renee' Reams](#)  
[Roland Matthews](#)  
[Margarita Echeverri](#)  
[Lucio Miele](#)  
[Roy Weiner](#)  
[Folakemi Odedina](#)  
[Roy Duhe](#)  
[Bettina Drake](#)  
[Idhaliz Flores](#)



## STAY CONNECTED

Become a GMaP Partner and stay connected. Let us know what information you want to know, how can we better help, or if you're interested in collaboration. Do you want us to highlight your programs? Join [GMaP Region 2](#) today and let us know what information you want us to feature in our next newsletter!



GMaP | Region 2 | 813-745-6502 | [GMap.Region2@moffitt.org](mailto:GMap.Region2@moffitt.org) | [Website](#)

**You are receiving this email as a Cancer  
Researcher in GMaP Region 2**