

GMaP Region 2

December 2020 Newsletter



Finishing Strong: Footsteps to Funding 2020

By Z'Kera Sims, MPH

GMaP Region 2 hosted its flagship targeted training workshop entitled Footsteps to Funding (F2F) on Wednesday, November 4 and Thursday, November 5, 2020. This 2-day, virtual, grant writing workshop brought together 22 doctoral trainees, post-doctoral fellows, and Early Stage Investigators (ESIs) in the fields of cancer and/or cancer health disparities research representing nine institutions across GMaP Region 2. After participating in the F2F targeted training workshop, scholars were equipped with the tools to meet the following objectives:

- Be familiar with essential components of various funding mecha-

nisms (e.g. F31, F99/K00, K01, K08, K22, K99/R00, R03, R2).

- Identify available resources (GMaP, NCI, etc.) to support grant submission
- Cite examples on how to customize research and training activities that support a career development plan
- Describe at least five grant writing strategies that contribute to a successful and competitive grant application
- Map out next steps to prepare grant application

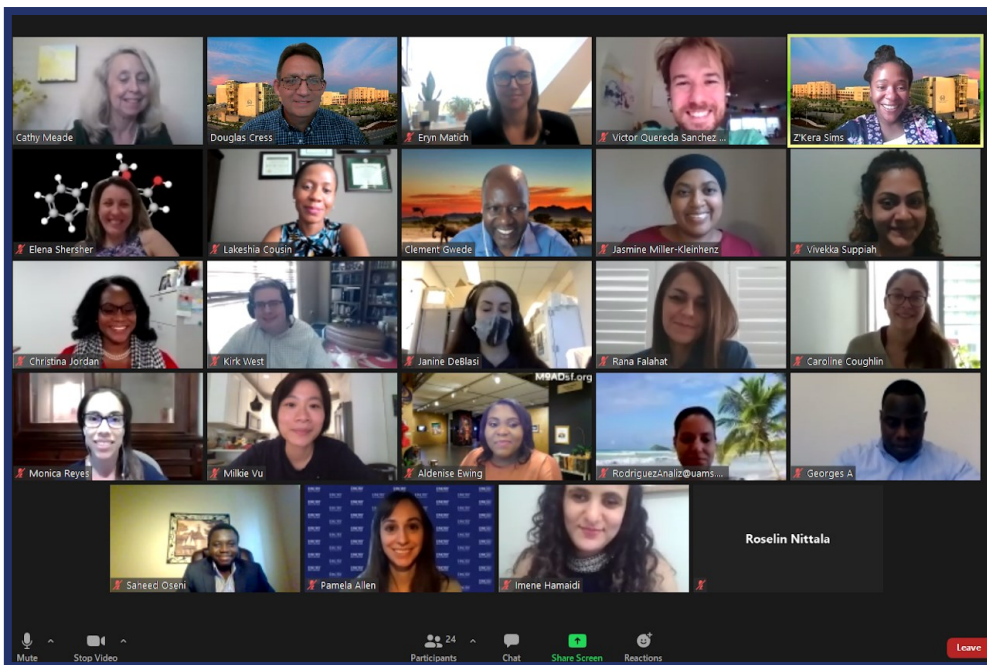
More than 12 Moffitt faculty participated in the training. They provided one-on-one mentorship and feedback about scholars' specific

What's Inside?

GMaP R2 Scholar Highlight: Dr. Ewan Cobran	2
2021 SPIRIT-CHD	3
GMaP R2 Resources	4

aims and overall research ideas during small group breakout sessions on Zoom. Scholars also heard from [Dr. Hana Odeh](#), NCI Program Director (PD) and Training Navigator for the Center to Reduce Cancer Health Disparities (CRCHD). Dr. Odeh's presentation focused on providing an overview of CRCHD, the role of the NCI PD, and [Continuing Umbrella of Research Experiences \(CURE\)](#) grant opportunities offered through CRCHD.

A wide range of topics were covered over the 2-day interactive training, including how to outline the components of federal grant applications, crafting a sound application and research plan, general grant writing tips and strategies, and maximizing publications. As a closeout for the training, scholars were required to submit a Priorities Timeline detailing three major goals relating to their grant application submission. Over the next fiscal year, the GMaP R2 leadership team will provide additional support and resources to F2F participants that will help them submit competitive grant applications.



Participants from the 2020 Footsteps to Funding Virtual Training Workshop—Scholars presented their specific aims and research ideas to a group of peers and well-established faculty mentors at Moffitt Cancer Center.

Congratulations Dr. Ewan Cobran!

By Vivekka Suppiah, MSc

Dr. Ewan K. Cobran is an Assistant Professor at the University of Georgia's College of Pharmacy, a GMaP Region 2 Scholar and now, a K01 awardee! Dr. Cobran honed his research project entitled "Genetic Literacy and Patient-Caregiver Communication of Prognostic Genetic Technology for Localized Prostate Cancer" and was awarded a 5-year National Cancer Institute K01 Early Career Development Award for \$862,985. In 2016, Dr. Cobran was a participant in GMaP Region 2's Targeted Training Workshop, which offered him guidance on essential grant application components, grant-writing tips and connections to well-established scientists in cancer health disparities.

Dr. Cobran's research investigates the relationship(s) between medically underserved populations, genetic literacy, patient-provider communications, and prostate cancer disparities. Specifically, his work focuses on three main lines of scientific inquiry: (1) applying Community-based Participatory Research and to evaluate genetic literacy, awareness,

barriers, and facilitators to implementation of prognostic genetic technology dissemination in African-American and Rural White men with localized prostate cancer; (2) the impact of health social determinants (e.g. socioeconomic status, literacy, nativity, social integration, community structure, quality of care) on prostate cancer prevention, barriers to treatment, and treatment related outcomes; and (3) connections between Androgen Deprivation Therapy (ADT) associated comorbid health conditions (e.g., diabetes, myocardial infarction, and cardiovascular disease) and survival; analyzing whether these health conditions vary by race and ethnicity for men with advanced prostate cancer.

The [NCI Mentored Research Scientist Development Award to Promote Diversity \(K01\)](#) is designed to enhance workforce diversity by promoting cancer research career development and mentored training experience to individuals from underrepresented groups. Postdoctoral and early stage investigators from an underrepresented racial/ethnic group or



Dr. Ewan Cobran is an Assistant Professor and GMaP R2 Scholar. He was recently awarded a K01 grant for a research project he developed at GMaP R2's 2016 Targeted Training Workshop.

with a disability, as well as two to five years of training following completion of a doctoral degree are eligible to apply. Interested in applying? Contact your GMaP Region 2 team at gmap.region2@moffitt.org—we are here to help! Congratulations to Dr. Cobran on your achievement! Source: <https://rx.uga.edu/ewan-cobran-receives-national-cancer-institute-k01-award/>



GMaP R2's 2016 Targeted Training Workshop Cohort—Dr. Cobran traveled to Tampa, Florida to complete the 2-day training workshop that focused on developing a K-grant application. Dr. Alicia Best from this cohort (third from right) also received a K award while others continue to fine-tune their applications.

Apply to the SPIRIT-CHD Summer Internship!

2021 SPIRIT-CHD SUMMER INTERNSHIP PROGRAM

- Are you a current undergraduate or medical student?
- Do you have an interest in cancer health disparities research?



Join us for a PAID 8-week summer
INTERNSHIP at Moffitt Cancer Center!

Program Components:

- Mentored research experiences and formal training in biobanking, precision medicine and cancer health disparities
- Community outreach experiences in underrepresented communities

**APPLICATIONS ARE
NOW OPEN!**

To apply, visit

<https://www.spiritchd.com>

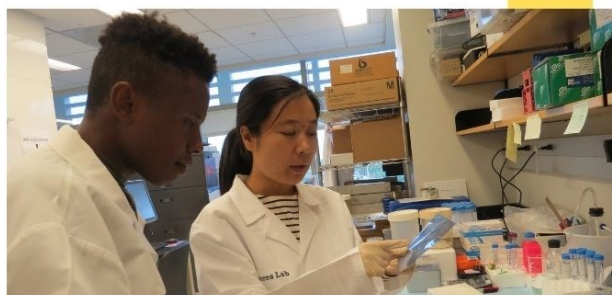
Questions?

Please contact Z'Kera Sims

E-Mail: spiritchd@moffitt.org

Phone: (813) 745-8726

Funded by the National Cancer Institute Grant No. P20CA202920



GMAP R2 Resources

GMAP Region 2 Needs You!

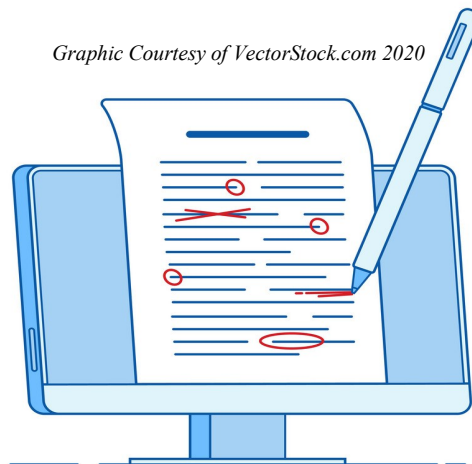
Do you like what you see? Are you clicking on these links?

Then share this newsletter and our network with your trainees, colleagues and mentors!

You can contact us at gmap.region2@moffitt.org if you are interested in additional opportunities (e.g. upcoming events, training, programs, job postings, funding notices, resources) via our monthly e-mail blast or if you would like to feature a program or opportunity for others through our network.



Despite COVID-19 travel restrictions, research meetings are still in play! The **Trainee/Early Stage Investigator Registration Support Scholarship** is intended to support underrepresented scholars and investigators in cancer research or cancer health disparities research by providing reimbursement for registration fees associated with virtual or in-person meetings, conferences, workshops or training. To learn more or apply, click [here!](#)



The **Expert Grant Review Award** is intended to assist New Investigators and Early Stage Investigators who are applying for funding awards with feedback from senior researchers in the region. Region 2 is comprised of a variety of Cancer and CHD researchers who are experienced with the grant writing process and successful grant funding outcomes and are ready to help you! To apply and receive game-changing feedback on your next grant application, click [here!](#)

Thank you for Joining GMAP Region 2!

The Geographic Management of Cancer Health Disparities Program (GMAP) — consists of 7 regions and engages more than 1,200 disparities researchers, diversity trainees, and community health educators — employs a systematic and comprehensive strategy for building networks for the support and efficient management of cancer and cancer health disparities (CHD) research, training and infrastructure. **GMAP Region 2** is comprised of Alabama, Arkansas, Florida, Georgia, Louisiana, Mississippi, Missouri and Puerto Rico and is based at Moffitt Cancer Center in Tampa, Florida. GMAP provides enhanced access to career development resources, such as job openings, travel/scholarship funding, grant writing workshops, connections to the Training Navigator at the National Cancer Institute, and so much more!



Don't forget to follow us on social media!



Z'Kera Sims, MPH
Regional Coordinating Director

Vivekka Suppiah, MSc
Research Coordinator

Email: gmap.region2@moffitt.org
Phone Number: (813) 745-8726

This newsletter is made possible by grant 3P30CA076292-21S4 Geographic Management of Cancer Health Disparities Program (GMAP Region 2) (Cleveland, PI; Meade & Gwede, Co-Project Directors) funded by the National Cancer Institute.